

## Anet A8 E3D v6 Mount



InducedRug

[VIEW IN BROWSER](#)

updated 20. 1. 2023 | published 20. 1. 2023

### Summary

Wanted to add x drag chain support to an existing v6 mount for the a8

[3D Printers](#) > [3D Printers - Upgrades](#)

Tags: [a8](#) [anet](#) [aneta8](#) [aneta8upgrade](#)

Have 2 versions. v6 requires heatset inserts and v2 just uses the screws to thread the part

The v6 also adds compatibility with a backplate made from the stock anet a8.

4 holes have been clearanced for the bolt heads so the adaptor can be removed without moving the bearing blocks or the belt

Non-printed hardware:

M3 ~25mm Screws, M3 Heatset Inserts, M3 Washers

Designed to be compatible with

<https://www.thingiverse.com/thing:1905344>

Belt Holder Remixed from

<https://www.thingiverse.com/thing:2425783>

Adaptor Remixed from

<https://www.thingiverse.com/thing:2099577>

(Kinda remixed, I didnt take any dimensions from the above, I just looked at them)

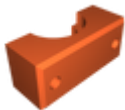
## Model files



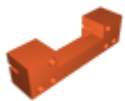
**a8-e3d-v6-mount-v2.stl**



**a8-e3d-v6-mount-v6-threaded-insert.stl**



**a8-e3d-v6-mount-clamp-v2.stl**



**anet-a8-13mm-x-belt-holder-v5.stl**

## License ©

This work is licensed under a  
[Creative Commons \(4.0 International License\)](#)



**Attribution—Noncommercial—Share Alike**

- ✗ | Sharing without ATTRIBUTION
- ✓ | Remix Culture allowed
- ✗ | Commercial Use
- ✗ | Free Cultural Works
- ✗ | Meets Open Definition

