

Flex Reindeer

 **Jeremy H**

[VIEW IN BROWSER](#)

updated 6. 12. 2019 | published 3. 12. 2019

Summary

This is a Flex Reindeer designed in Fusion 360. No supports needed.



5.59 hrs



1 pcs



0.20 mm



0.40 mm



PLA



63 g



Prusa
MK3/S/S+

[Art & Design](#) > [Other Art & Designs](#)

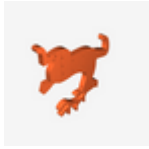
Tags: [christmas](#) [flex](#) [reindeer](#) [holidays](#)

This is a Flex Reindeer designed in Fusion 360. No supports needed. I printed it at 0.2 mm with white PLA and came out great.

Print instructions

0.2 mm, no supports needed.

Model files



flex-deer-final.stl

Print files



mk3_pla-flex-deer-final.gcode

🌀 PLA 🌀 0.40 mm 📏 0.20 mm ⌚ 5.59 hrs ⚖️ 63 g 🖨️ Prusa MK3/S/S+

License ©



This work is licensed under a
[Creative Commons \(International License\)](#)

Public Domain

-
- ✓ | Sharing without ATTRIBUTION
 - ✓ | Remix Culture allowed
 - ✓ | Commercial Use
 - ✓ | Free Cultural Works
 - ✓ | Meets Open Definition