



## Customizable: Ikea Samla 5L Miniature storage and transportation tray for 20/25/32/40mm bases



fidoriel

[VIEW IN BROWSER](#)

updated 5. 2. 2024 | published 5. 2. 2024

### Summary

A cheap Storage/Transportation solution for up to 84 Miniatures.

[Toys & Games](#) > [Board Games](#)

Tags: [ikea](#) [32mm](#) [miniature](#) [base](#) [40mm](#) [25mm](#)  
[samla](#) [miniatures](#) [20mm](#)

**NOW CUSTOMIZABLE:** <https://github.com/fidoriel/Mini-Tray>

**You can modify this code to generate you size. You may create a PR.**

Update 26.01.2023: Today I have decided to make the OpenSCAD source public, because there were some requests for other sizes. Feel free to contribute to the GitHub code and make your minis fit with my system. PRs welcome. This does include new sizes, new strucure shapes and overall code improvements.

A cheap Storage/Transportation solution for up to 84 28mm miniatures with a 25mm base. Recently I have created 25 and 32mm version too, but they are not as efficient. Please note, the 32mm and 40mm versions have never been tested with minis or by test printing them by me.

Please use Samla Clips to keep the lid on the box while transportation like this: <https://www.thingiverse.com/thing:2110134>

Buy them from Ikea or print some. This will also keep all inserts in place with no friction and keep them from moving and destroying each other. This storage solution will cost you about 6€ including the box. This makes 0.71ct per miniature for 25mm bases.

The Samla Shape is based on this: <https://www.printables.com/model/27867-ikea-samla-inserts-customizable>

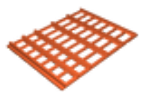
The Miniatures slide in the trays and are kept from falling out by the box walls and by the T-Slot. You can turn them in any direction. It is also shockproof to some degree. The minis also will not touch because the base is fixed if slided in the trays.

You will need around 250g of filament.

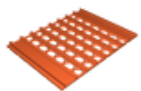
## Model files



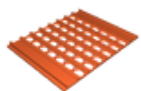
**25mm\_tray\_2.stl**



**25mm\_40mm\_bottom.stl**



**20mm\_tray\_1.stl**

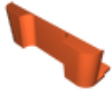


**20mm\_tray\_2.stl**



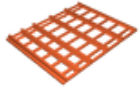
**32mm\_tray\_1.stl**

---



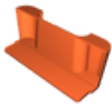
**ikea\_samla\_inserts\_2\_handle.stl**

---



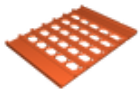
**25mm\_40mm\_top.stl**

---



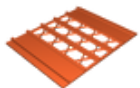
**ikea\_samla\_inserts\_1\_handle.stl**

---



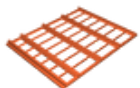
**25mm\_tray\_1.stl**

---



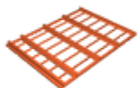
**32mm\_tray\_2.stl**

---



**samla\_minis\_3x50\_top.stl**

---



**samla\_minis\_3x50\_bottom.stl**

## License ©

This work is licensed under a  
GNU



- ✗ | Sharing without ATTRIBUTION
- ✓ | Remix Culture allowed
- ✓ | Commercial Use
- ✓ | Meets Open Definition
- i | Share under the same license