



## Ultimate C270 telescope adapter



CGrassin

[VIEW IN BROWSER](#)

updated 12. 4. 2022 | published 10. 2. 2022

### Summary

This thing is a 3D-printed front for the C270 Logitech Webcam. It converts it for astrophotography, to be used with a...

[Learning](#) > [Physics & Astronomy](#)

Tags: [telescope](#) [astronomy](#) [astrophotography](#) [logitechc270](#)

This thing is a 3D-printed front for the C270 Logitech Webcam. It converts it for astrophotography, to be used with a telescope with standard 1.25" eyepiece.

Compared to the others, it uses no glue or additional hardware, and is very easy to print without support. It also features an inner wall to shield the sensor. Preferably use black PLA and don't forget to desolder or disable the LED of the Webcam.

I use it with AstroDMX on Linux.

I included an OpenSCAD cap (from <https://www.thingiverse.com/thing:3134224>) and the source SolidWorks files.

I dedicate this work to the public domain.

## Print Settings

### Printer Brand:

Anet

### Printer:

A8

### Rafts:

No

### Supports:

No

### Resolution:

0.2mm

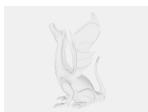
### Infill:

20%

**Filament:** Ice Filament PLA Black

Category: Physics & Astronomy

## Model files



eyepiececap.scad

---



c270\_astrocamera-bottom.stl

---



c270\_astrocamera-top.stl

---



c270\_astrocamera.sldprt



eyepiececap.stl

[Find source .stl files on Thingiverse.com](#)

## License

This work is licensed under a  
**Creative Commons (International License)**



**Public Domain**

- 
- ✓ | Sharing without ATTRIBUTION
  - ✓ | Remix Culture allowed
  - ✓ | Commercial Use
  - ✓ | Free Cultural Works
  - ✓ | Meets Open Definition