



Door Bin/Shelf/ Storage for Refrigerator - More Ketchup!



Mitchell Takes

[VIEW IN BROWSER](#)

updated 12. 4. 2022 | published 12. 4. 2022

Summary

Broken Refrigerator shelf, or just need more storage in the cold box?
Download me!



17.50 hrs



2 pcs



0.30 mm



0.40 mm



PLA



363 g



Prusa
MK3/S/S+

[Household](#) > [Kitchen](#)

Tags: [kitchen](#) [shelf](#) [refrigerator](#) [storage](#) [food](#) [ketchup](#)
[broken](#) [freezer](#) [mustard](#) [mustrd](#) [ht21ts85sp](#) [haier](#)

Hi,

This model is for replacing or adding a shelf to a Haier refrigerator, model HT21TS85SP. It may work for other models, but I have no idea.

The print is too large for a Prusa i3 MK3S+ to print in one piece, so it is printed in two pieces and then glued together. It needs support material to

achieve the required mounting geometry. I used just regular super glue and it has help up to the cold and weight of items just fine.

Please let me know if you have any questions or ideas for improvement!

Thanks,

Mitchell

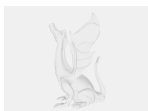
Model files



lh-door-bin.3mf

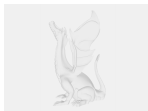


rh-door-bin.3mf



rh-door-bin.sldprt

☐ Either of these downloads have the other half of the bin as a suppressed feature.



lh-door-bin.sldprt

☐ Either of these downloads have the other half of the bin as a suppressed feature.

Print files



rh-door-bin_03mm_pla_mk3s_8h45m.gcode

🌀 PLA 🌀 0.40 mm ≡ 0.30 mm ⌚ 8.76 hrs 📊 181 g 🖨 Prusa MK3/S/S+



lh-door-bin_03mm_pla_mk3s_8h44m.gcode

🌀 PLA 🌀 0.40 mm ≡ 0.30 mm ⌚ 8.74 hrs 📊 181 g 🖨 Prusa MK3/S/S+

License

This work is licensed under a
Creative Commons (International License)



Public Domain

- ✓ | Sharing without ATTRIBUTION
- ✓ | Remix Culture allowed
- ✓ | Commercial Use
- ✓ | Free Cultural Works
- ✓ | Meets Open Definition