



Replacement for Gira frames (system 55)

k khorben

[VIEW IN BROWSER](#)

updated 27. 10. 2023 | published 27. 10. 2023

Summary

Designed to replace or enhance the looks of frames around wall sockets and meant to be compatible with Gira's system 55.



10.20 hrs



3 pcs



0.15 mm



0.40 mm



PLA



98 g



Prusa
MK3/S/S+

[Household](#) > [Other House Equipment](#)

Tags: [thingiverse](#)

I have designed this to replace or enhance the looks of frames around wall sockets. This should be compatible with Gira's system 55. Suitability for any purpose is not guaranteed! Install at your own risk. As always, be very careful when working around electrical devices and equipment; seek help from a professional if necessary.

Print Settings

Printer Brand:

Prusa

Printer:

I3 MK3S

Supports:

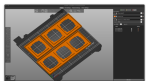
Yes

Infill:

100%

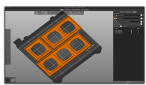
Category: Replacement Parts

This remix is based on



Replacement for Gira frames (system 55)

by khorben



Replacement for Gira frames (system 55)

by khorben

Model files



e2-2-25mm.stl



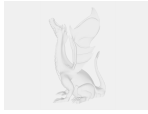
e2-3-25mm.stl



e2-1-25mm.stl



e2-1-25mm.fcstd



e2-2-25mm.fcstd



e2-3-25mm.fcstd

Print files



e2-1-25mm_015mm_pla_mk3s_1h59m.gcode

⚙️ PLA ⚙️ 0.40 mm ⚙️ 0.15 mm ⌚ 1.99 hrs ⚖️ 19 g 🖨️ Prusa MK3/S/S+



e2-2-25mm_015mm_pla_mk3s_3h24m.gcode

⚙️ PLA ⚙️ 0.40 mm ⚙️ 0.15 mm ⌚ 3.40 hrs ⚖️ 33 g 🖨️ Prusa MK3/S/S+



e2-3-25mm_015mm_pla_mk3s_4h49m.gcode

⚙️ PLA ⚙️ 0.40 mm ⚙️ 0.15 mm ⌚ 4.81 hrs ⚖️ 47 g 🖨️ Prusa MK3/S/S+

[Find source .stl files on Thingiverse.com](#)

License ©

This work is licensed under a
Creative Commons (4.0 International License)



Attribution—Noncommercial—Share Alike

✖ | Sharing without ATTRIBUTION

- ✓ | Remix Culture allowed
- ✗ | Commercial Use
- ✗ | Free Cultural Works
- ✗ | Meets Open Definition