

## Solvol3D SV01 SKR v1.3 bracket replacement Motherboard

 **Bookaroo**

[VIEW IN BROWSER](#)

updated 12. 4. 2022 | published 11. 2. 2022

### Summary

This is a bracket I made for a following video on my Youtube channel, for replacing the motherboard on the Solvol3D...

[3D Printers](#) > [3D Printers - Upgrades](#)

Tags: [mod](#) [bracket](#) [fan](#) [controller](#) [motherboard](#) [skrv13](#)  
[sovol](#) [sv01](#)

This is a bracket I made for a following video on my Youtube channel, for replacing the motherboard on the Solvol3D SV01 to a SKR V1.3 32bits controller using Marlin 2.0

V2 - Moved the board 2mm away from the side of the case

**\*WARNING\***

My printer had 24 volts between V- and the case ground, I have burned 2 boards and 8 drivers before finding this:

The screws holding the power supply are too long and shorted out inside the power supply, I recommend that you take out 1 screw, measure the thread length, if it's 6mm add a couple of washers to bring the threads

between 4mm and 4.5mm and do all 4 screws the same way. (See my pictures)

## Print Settings

### Printer:

Haribo

### Rafts:

No

### Supports:

No

### Resolution:

0.1 mm - 0.3 mm

### Infill:

15 %

### Filament:

Amzd3D PLA

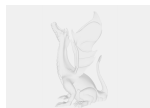
Black

### Notes:

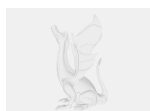
I used 0.3mm layer height.

Category: 3D Printer Parts

## Model files



large\_display\_sv01\_skr\_v13\_and\_fan\_bracket\_v2\_132.stl



large\_display\_sv01\_skr\_v13\_and\_fan\_bracket\_132185.stl



sv01\_skr\_v13\_and\_fan\_bracket\_v2.stl



sv01\_skr\_v13\_and\_fan\_bracket.stl

[Find source .stl files on Thingiverse.com](#)

## License ©

This work is licensed under a  
**Creative Commons (4.0 International License)**



### Attribution

- 
- ✗ | Sharing without ATTRIBUTION
  - ✓ | Remix Culture allowed
  - ✓ | Commercial Use
  - ✓ | Free Cultural Works
  - ✓ | Meets Open Definition