

Rack & Worm Linear Slide



LoboCNC

[VIEW IN BROWSER](#)

updated 12. 4. 2022 | published 11. 2. 2022

Summary

This linear slide could be used for positioning optical elements or the like. The 6" linear rail sections can be...

[Learning](#) > [Engineering](#)

Tags: [linearslide](#)

This linear slide could be used for positioning optical elements or the like. The 6" linear rail sections can be mounted end-to-end to create any length rail system. The rails mount with #6 screws on 2" centers, and there are various #6 screw hole patterns on the carriage for attaching fixtures. Please refer to the included STEP file for additional details.

Print Settings

Printer:

UDIO

Rafts:

No

Supports:

No

Resolution:

0.2mm

Infill:

20%

Filament:

Inland PLA

Dandelion Yellow

Notes:

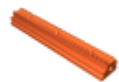
The worm piece has an integral breakaway support piece, so you shouldn't need to turn on supports. Just break away the ring that fills the gap between the knob and the worm gear after printing.

Once printed, clean everything up, apply a little grease to the worm and bearing surfaces and insert the worm into the carriage as shown. Then slide the carriage onto the rail, turning the knob as you go. Category: Engineering

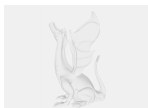
Model files



wormslide-carriage.stl



wormslide-rail.stl



wormslide.step



wormslide-worm.stl

License ©

This work is licensed under a
Creative Commons (4.0 International License)



Attribution-ShareAlike

- ✗ | Sharing without ATTRIBUTION
- ✓ | Remix Culture allowed
- ✓ | Commercial Use
- ✓ | Free Cultural Works
- ✓ | Meets Open Definition