



Print-In-Place Bow Compass



LoboCNC

[VIEW IN BROWSER](#)

updated 12. 4. 2022 | published 11. 2. 2022

Summary

Modeled after precision drafting compasses, this 3D printable one prints as a single piece, pre-assembled! It uses a...

[Learning](#) > [Math](#)

Tags: [compass](#)

Modeled after precision drafting compasses, this 3D printable one prints as a single piece, pre-assembled! It uses a standard 6-sided pencil.

Print Settings

Printer Brand:

MakerGear

Printer:

M2

Rafts:

No

Supports:

Yes

Resolution:

0.2mm

Infill:

20%

Notes:

For best results, set your line width to 0.4mm and print slowly.

UPDATE: I've made the bow spring at the top a little less stiff. (You should preview your g-code to make sure this spring section is printed solid.) I also made it so that the center fulcrum piece won't come loose if the compass is all the way open.

Post-Printing

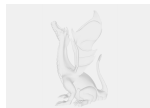
Remove the support material carefully. You'll need to pick it out of the nooks and crannies with a pointy tool or x-acto knife. Then, gently grab the adjuster screw with some small pliers and twist it back & forth slightly to break it free from the pivots. Once free, run the screw back & forth until it operates smoothly. Insert about a 1 1/2" length of pencil and start drafting!

Category: Math

Model files



compass.stl



compass.step

[Find source .stl files on Thingiverse.com](#)

License

This work is licensed under a
Creative Commons (4.0 International License)



Attribution-ShareAlike

- ✗ | Sharing without ATTRIBUTION
- ✓ | Remix Culture allowed
- ✓ | Commercial Use
- ✓ | Free Cultural Works
- ✓ | Meets Open Definition