



Audi DTM Steering Wheel for SimRacing



Stanley

[VIEW IN BROWSER](#)

updated 13. 7. 2022 | published 11. 2. 2022

Summary

This is remix of Formula B1 - (Sim racing) steering wheel for Thrustmaster T300 RS wheel base. With other wheel mount...

[Hobby & Makers](#) > [Other Ideas](#)

Tags: [simracing](#) [thrustmaster](#) [simrig](#) [simracingrig](#)
[thrustmastert300](#) [drivingsimulator](#) [drivingwheel](#)
[simracingwheel](#)

Project main site: <https://www.thingiverse.com/thing:4891321>

This is remix of [Formula B1 - \(Sim racing\) steering wheel](#) for Thrustmaster T300 RS wheel base. With other wheel mount or quick-release, this wheel could be also used for another wheel base.

All buttons are connected to Arduino Nano with common ground. Arduino Nano is connected to wheel base via mini-Din 6 pin connector (SPI serial protocol), so no external power, drivers or USB connection to PC is needed.

More info about HW and Arduino code is here <https://rr-m.org/blog/thrustmaster-t300rs-steering-wheel-arduino-emulator/>

Arduino pins - buttons:

D0 - Start (8)

D1 - Select (7)

D3 - Shift gear up (1)

D4 - R2 (9)

D6 - Circle (5)

D7 - Cross (6)

D8 - Shift gear down (2)

D9 - Square (4)

D11 - triangle (3)

A0 - D-Pad up

A1 - D-Pad left

A2 - D-Pad right

A3 - D-Pad down

A4 - L2 (10)

A5 - PS (13)

Other components used in this project:

- Big paddle <https://www.thingiverse.com/thing:4840117>
- 70mm Hub Adaptor <https://www.thingiverse.com/thing:2630578>

BoM:

- 3D printed parts
- 3 mm aluminum sheet (minimum 300 mm x 170 mm)
- 6D Carbon Black foil (glossy) [Aliexpress](#)
- 6x M5 x 70 mm bolts (DIN 7991)
- 6x M5 nuts (DIN 934)
- 4x M3 x 8 mm for panel (DIN 912)
- 4x M3 threaded insert nuts (for panel) [Aliexpress](#)
- 6x M3 x 25 mm for handles (DIN 912)
- 4x M3 x 8 mm for paddles (DIN 7991)
- 4x M3 x 8 mm for clutch paddles (DIN 912)
- 10x M3 nuts for handles and paddles (DIN 934)
- 6x M6 x 8 mm for shifter body (ISO 7380-2)
- 6x M4 x 8 mm for shifter body (DIN 7991)

- 6x M4 nut for shifter body (DIN 934)
- 6x M2.5 x 10 for micro-switches in shifter body
- 2x 2.9 mm x 6 mm screw (DIN 7981) for Arduino Nano Terminal Adapter
- 3x aluminum pipe 8 x 6 x 26 mm inserts for extra strength (8 mm outer diameter, 6mm inner diameter and 26mm length)
- 2x A4 Size Suede (Synthetic Leather) for handles [Aliexpress](#)
- 6x Neodymium magnet 20 mm x 3mm
- 3x micro-switch for paddles
- 12x 12mm mini switch [Aliexpress](#)
- Arduino Nano [Aliexpress](#)
- Arduino Nano Terminal Adapter [Aliexpress](#)
- Male mini-Din 6 pin connector (for Thrustmaster wheel base)
- Wires

Print Settings

Printer Brand:

Prusa

Printer:

Prusa Clone

Rafts:

No

Supports:

No

Resolution:

0.2mm

Infill:

25%

Video

Category: Hobby

Model files



base_single_clutch.stl



base_dual_clutch.stl



center_hub_spacer_30mm.stl



audi_logo.stl



formula_b1_-_base_drawing_without_usb_connector.skp



shifter.stl



handle_back_left.stl



clutch_magnet_15x2.stl



paddle_clutch_left.stl



formula_b1_-_base_drawing_without_usb_connector.stl



paddle_big.stl



formula_b1_-_base_drawing_without_usb_connector.scad



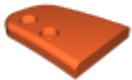
base_no_clutch.stl



formula_b1_-_base_drawing_without_usb_connector_s.stl



paddle_left.stl



paddle_clutch_right.stl



handle_front_left.stl



button_strip_small.stl



clutch.stl



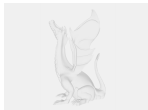
shifter_magnet_15x2.stl



base_v04.skp



paddle_right.stl



shifter.skp



formula_b1_-_base_drawing_without_usb_connector.dxf



handle_back_right.stl

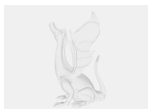


handle_front_right.stl

Other files



formula_b1_-_base_drawing.pdf



audi_dtm_stickers.pdf

License

This work is licensed under a
Creative Commons (4.0 International License)



Attribution—Noncommercial—Share Alike

- ✗ | Sharing without ATTRIBUTION
- ✓ | Remix Culture allowed
- ✗ | Commercial Use
- ✗ | Free Cultural Works
- ✗ | Meets Open Definition