

## Ken Block's 2016 Ford Focus RS RX steering wheel



Stanley

[VIEW IN BROWSER](#)

updated 12. 4. 2022 | published 11. 2. 2022

### Summary

This is sim-racing steering wheel center panel replica used in following cars: 2016 Ford Focus RS RX (Ken Block) 2018...

[Gadgets](#) > [Other Gadgets](#)

Tags: [thrustmaster](#) [ford](#) [fordfocus](#) [t300](#) [thrustmastert300](#) [t300rs](#) [bentley](#)

This is sim-racing steering wheel center panel replica used in following cars:

- 2016 Ford Focus RS RX (Ken Block)
- 2018 Ford Focus RS RX (Steve Arpin)
- 2014 Bentley Continental GT3

After printing, wrap panel with carbon vinyl foil, cut all holes a mount switches and encoders.

BoM:

- 3D printed parts
- 6x M5 bolts
- 6x M5 nut
- 12x 12mm switch [Aliexpress](#)

- 4x rotary encoders [Aliexpress](#)
- Arduino Pro Micro [Aliexpress](#)
- male mini-Din 6 pin connector (for Thrustmaster wheel base)
- Wires

## Print Settings

### Printer Brand:

Prusa

### Printer:

Prusa Clone

### Rafts:

No

### Supports:

No

### Resolution:

0.2mm

### Infill:

20%

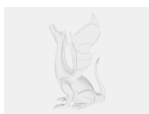
**Filament:** PM PETG or PLA black

Category: Video Games

## Model files



shape\_top.stl



shape.skp

---



**2016\_ford\_focus\_rs\_rx\_wheel\_plate.stl**



**2016\_ford\_focus\_rs\_rx\_wheel\_plate.scad**

[Find source .stl files on Thingiverse.com](#)

## License ©

This work is licensed under a

**Creative Commons (4.0 International License)**



**Attribution-NonCommercial**

- 
- ✗ | Sharing without ATTRIBUTION
  - ✓ | Remix Culture allowed
  - ✗ | Commercial Use
  - ✗ | Free Cultural Works
  - ✗ | Meets Open Definition