

Prusa I3 wall mount/stabilizier



vindolin

[VIEW IN BROWSER](#)

updated 12. 4. 2022 | published 11. 2. 2022

Summary

I found my Prusa I3 to be a bit wobbly on the y axis so I made this mod to screw it to the wall. This mod needs: 3x M6...

[3D Printers](#) > [3D Printers - Upgrades](#)

Tags: prusai3

I found my Prusa I3 to be a bit wobbly on the y axis so I made this mod to screw it to the wall.

This mod needs:

- 3x M6 nut
- 1x M6 threaded rod
- 1x counter sunk screw (head diameter \leq 6mm)
- 1x flat washer

Edit: added one for the x axis too.

Category: 3D Printer Parts

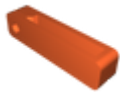
Model files



prusa_fixture_wall2.stl



prusa_fixture_wall_x.stl



prusa_fixture_frame.stl

[Find source .stl files on Thingiverse.com](#)

License ©

This work is licensed under a
Creative Commons (4.0 International License)



Attribution

- ✗ | Sharing without ATTRIBUTION
- ✓ | Remix Culture allowed
- ✓ | Commercial Use
- ✓ | Free Cultural Works
- ✓ | Meets Open Definition