

Stemfie Sailcar



Cantareus

[VIEW IN BROWSER](#)

updated 12. 4. 2022 | published 11. 2. 2022

Summary

Use this model as a fun project for kids or as part of a STEM activity. Have students design their own sails and try...

[Learning](#) > [Physics & Astronomy](#)

Tags: [steam](#) [car](#) [stem](#) [sailing](#) [wind](#) [stemfie](#)

Use this model as a fun project for kids or as part of a STEM activity. Have students design their own sails and try different mast positions to experiment with performance and stability.

Check the second photo for parts. Axles are 2mm metal rods, 50mm long for rear axle and 14mm long for front axle. There's a jig for pressing the wheels onto the axles, it works but it's not great. Try if you want to otherwise you can also use a vice, g-clamp or hammer.

This is my first time using [Stemfie](#). A free 3D-printable construction set by Paulo Kiefe. The blue parts from the second photo show the standard Stemfie parts, they're included in the build plate STL. Check [stemfie.org](#), you may want to substitute parts or print additional parts to make a different built.

12BU threaded beam

6BU threaded beam

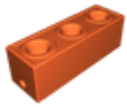
0.25BU screw x 4

1BU screw x 4

0.5BU nut x 3

Category: Physics & Astronomy

Model files



rear_axle_mount.stl



stemfie.scad



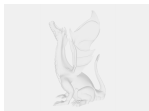
sailcar_buildplate.stl



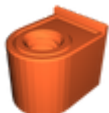
stemfie_sailcar.scad



wheel-rear.stl



threads.scad



front_axle_mount.stl



base.stl



wheel-front.stl



wheel_jig.stl

[Find source .stl files on Thingiverse.com](https://www.thingiverse.com)

License ©

This work is licensed under a
Creative Commons (4.0 International License)



Attribution—Noncommercial—Share Alike

-
- ✗ | Sharing without ATTRIBUTION
 - ✓ | Remix Culture allowed
 - ✗ | Commercial Use
 - ✗ | Free Cultural Works
 - ✗ | Meets Open Definition