



Compact Cable Combs



HeXXy

[VIEW IN BROWSER](#)

updated 11. 2. 2022 | published 11. 2. 2022

Summary

These cable combs are more compact than standard ones and are compatible with individually sleeved cabling

[Hobby & Makers](#) > [Electronics](#)

Tags: [computer](#) [powersupply](#) [cablemanagement](#) [cablecomb](#)
[psucablecomb](#)

These cable combs are more compact than standard ones and are compatible with individually sleeved cabling (including CableMod paracord).

The only way to use these is to pull the pin from at least one plug using a tool to do it. The tools are available fairly cheap at major internet retailers. Look for 'molex 11-03-0044 pin extractor'. There are YouTube videos available on how to use the extractor. The pin will fit through the holes with a bit of jiggling and a gentle push.

Included are:

Motherboard Connectors

26 Pin - For EVGA ATX connectors

24 Pin - Standard ATX connectors

2x2 Pin - Additional Motherboard Power

4x2 Pin - Additional Motherboard Power

Graphics Card Power Connectors

3x2 Pin - six pin graphics card power

3x4 Pin - dual six pin graphics card power connector (useful in dual SLI setups)

3x6 Pin - triple six pin graphics card power connector (useful in triple SLI setups)

4x2 Pin - eight pin graphics card power connector

4x4 Pin - dual eight pin graphics card power connector (useful in dual SLI setups)

4x6 Pin - triple eight pin graphics card power connector (useful in triple SLI setups)

4+3x2 Pin - eight plus six pin graphics card power connector

4+3x4 Pin - dual eight plus six pin graphics card power connector (useful in dual SLI setups)

4+3x6 Pin - triple eight plus six pin graphics card power connector (useful in triple SLI setups)

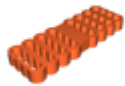
Other

5x1 Pin - SATA 5 Pin connectors

4x1 Pin - Molex 4 Pin connectors (This one is untested. May not work due to Molex pins being larger)

4x2 Pin - 8 Pin Graphics Card Power Connector

Model files



44x4pin.stl



43x2pin.stl



3x4pin.stl



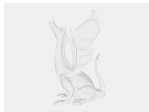
43x6pin.stl



2x2pin.stl



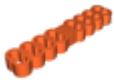
3x2pin.stl



combs.dxf



43x4pin.stl



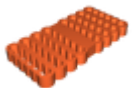
44x2pin.stl



4x1pin.stl



26pin.stl



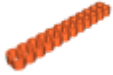
44x6pin.stl



4x2pin.stl



3x6pin.stl



24pin.stl



4x6pin.stl



5x1pin.stl



4x4pin.stl



combs.dwg

License

This work is licensed under a
[Creative Commons \(4.0 International License\)](https://creativecommons.org/licenses/by/4.0/)



Attribution

- ✗ | Sharing without ATTRIBUTION
- ✓ | Remix Culture allowed
- ✓ | Commercial Use
- ✓ | Free Cultural Works
- ✓ | Meets Open Definition

