

CoffeeDuck oder Aldi-Süd capsule stamper

M Mrsandman

[VIEW IN BROWSER](#)

updated 12. 4. 2022 | published 11. 2. 2022

Summary

I designed this to stamp my coffee in "Coffee Duck" capsules for Nespresso machines. Fits perfectly for the first ~3...

[Household](#) > [Kitchen](#)

Tags: [capsule](#) [coffeetamper](#)

I designed this to stamp my coffee in "Coffee Duck" capsules for Nespresso machines. Fits perfectly for the first ~3 mm of the capsule.

Edit: Works also well with capsules from Aldi-Süd.

Print Settings

Printer:

Anycubic Linear Kossel Plus

Rafts:

No

Supports:

No

Resolution:

0.2

Infill:

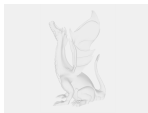
15

Notes:

I should have used 3 perimeter walls instead of 2. Printed on my Anycubid Linear Kossel Plus.

Category: Kitchen & Dining

Model files



stopfer.obj

[Find source .stl files on Thingiverse.com](#)

License

This work is licensed under a
Creative Commons (4.0 International License)



Attribution

-
- ✗ | Sharing without ATTRIBUTION
 - ✓ | Remix Culture allowed
 - ✓ | Commercial Use
 - ✓ | Free Cultural Works
 - ✓ | Meets Open Definition