



Valentines card

N Nikoś

VIEW IN BROWSER

updated 11. 2. 2022 | published 11. 2. 2022

Summary

Valentines card

[Art & Design](#) > [Other Art & Designs](#)

Tags: [valentinesday](#) [valentines](#) [valentinescard](#)

Valentines card, i have generate lithophane on this website:

<https://3dp.rocks/lithophane/>

I useb custom images that i have found on Internet:

<https://www.tapetus.pl/255367,molo-niebo-zachod-slonca.php>

https://www.freepik.com/free-vector/lovely-valentine-s-day-wallpaper-paper-style_11621372.htm

You have to use MMU to print this, i printed the model too thick, by using 4mm model. You can fit it so you can make it better. You can also generate your own lithophane and connect it with the attached stl files. The size of stl files to 100x70x1mm.

Use amf file to open this model.

Have a nice day ;)

Model files



people.stl



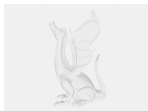
background.stl



hearts.stl



3mmzip.amf



4mm.amf

License ©

This work is licensed under a
[Creative Commons \(4.0 International License\)](#)



Attribution

- ✗ | Sharing without ATTRIBUTION
- ✓ | Remix Culture allowed
- ✓ | Commercial Use
- ✓ | Free Cultural Works
- ✓ | Meets Open Definition