

Adaptative tracing gauge - Trusquin adaptatif



BoBaCool

[VIEW IN BROWSER](#)

updated 9. 1. 2023 | published 9. 1. 2023

Summary

Tracing gauge for 1 inch to 30 mm wide rulers - Trusquin adaptable aux réglets de 25 à 30 mm de large



2.12 hrs



2 pcs



0.20 mm



0.40 mm



PLA



23 g



Prusa
MK3/S/S+

[Hobby & Makers](#) > [Tools](#)

Tags: [gauge](#) [makers](#) [measurementgauge](#) [outils](#) [rulers](#)
[tools](#) [woodworking](#) [trusquin](#) [woodworkingtools](#)

Created with Sketchup Make and Printed on MK3S+ with PLA

Steel rulers 25-30 mm width and 1 mm or more thick can fit.
Just add following stuff :

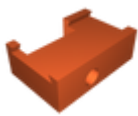
- One M4 nut, one drop glue
- One M4 wing screw
- One M5 compression ressort (+/-20mm)

Print tips

- Print position : largest face down.
- Perimeters : 4
- Infill : 20% or more
- Layer height : 0.2

All files uploaded.

Model files



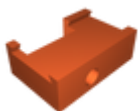
trusquin-reglable-v2-base.3mf



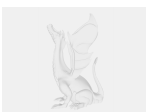
trusquin-reglable-v2-pince.3mf



trusquin-reglable-v2-pince.stl



trusquin-reglable-v2-base.stl



trusquin-reglable-v2.skp

📄 Sketchup 2017 version

Print files



trusquin-reglable-v2-base_02mm_pla_mk3s_1h41m.gcode

🌀 PLA 📏 0.40 mm ≡ 0.20 mm ⌚ 1.68 hrs ⚖️ 20 g 🖨️ Prusa MK3/S/S+



trusquin-reglable-v2-pince_02mm_pla_mk3s_26m.gcode

PLA 0.40 mm 0.20 mm 0.44 hrs 3 g Prusa MK3/S/S+

License

This work is licensed under a
[Creative Commons \(International License\)](#)



Public Domain

-
- ✓ | Sharing without ATTRIBUTION
 - ✓ | Remix Culture allowed
 - ✓ | Commercial Use
 - ✓ | Free Cultural Works
 - ✓ | Meets Open Definition