

Wyze Cam Lack table mount



Geekdad_3D

[VIEW IN BROWSER](#)

updated 12. 4. 2022 | published 12. 2. 2022

Summary

Just a quick remix so a Wyze cam can be mounted to the leg of a Lack table (enclosure). See the original instructions...

[3D Printers](#) > [Accessories](#)

Tags: [ikealack](#) [wyzecam](#) [wyzemount](#)

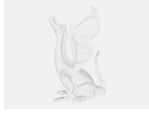
Just a quick remix so a Wyze cam can be mounted to the leg of a Lack table (enclosure). See the original instructions for attaching the cam to the mount. I am also including the Fusion 360 file if you need to adjust the screw holes or something. The holes are set for Ikea Fixa screws.

Category: 3D Printer Accessories

Model files

[wyze_lack_mount.stl](#)





wyzecam_lack_mount_v1.f3d

Other files



sources.txt

[Find source .stl files on Thingiverse.com](#)

License

This work is licensed under a
[Creative Commons \(4.0 International License\)](#)



Attribution

-
- ✗ | Sharing without ATTRIBUTION
 - ✓ | Remix Culture allowed
 - ✓ | Commercial Use
 - ✓ | Free Cultural Works
 - ✓ | Meets Open Definition