

## Wanhao/Maker Select v2 glass bed brackets with clip divots



Geekdad\_3D

[VIEW IN BROWSER](#)

updated 12. 4. 2022 | published 12. 2. 2022

### Summary

I just took these glass bed clips and added (subtracted) divots for the binder clips to rest in to help with them...

[3D Printers](#) > [Accessories](#)

Tags: [wanhaoduplicator3](#) [glassbedclip](#) [makerselectv2](#)

I just took these glass bed clips and added (subtracted) divots for the binder clips to rest in to help with them slipping off.

**EDIT** Use the one labeled fixed as the "divots" were to far from the edge and the binder clips didn't reach. Mistake on my part!

### Print Settings

#### Printer Brand:

Wanhao

#### Printer:

Wanhao Duplicator i3 V2

**Rafts:**

Doesn't Matter

**Supports:**

No

**Resolution:**

.2 mm

**Infill:**

30

**Notes:**

Actually a Maker Select V2 clone of this.

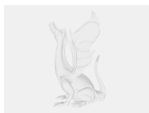
Category: 3D Printer Accessories

## Model files



glass\_bed\_brackets\_wdivots-all\_fixed.stl

## Other files



sources.txt

[Find source .stl files on Thingiverse.com](https://www.thingiverse.com)

# License ©

This work is licensed under a  
**Creative Commons (4.0 International License)**



## Attribution

---

- ✗ | Sharing without ATTRIBUTION
- ✓ | Remix Culture allowed
- ✓ | Commercial Use
- ✓ | Free Cultural Works
- ✓ | Meets Open Definition