

Connector for Wolffilms Smartphone Dashcam Holder (Version 0.8)

[VIEW IN BROWSER](#)

updated 12. 2. 2022 | published 12. 2. 2022

Summary

Replacement connector for Wolffilms Smartphone Dashcam Holder NOTE: this is a "work in progress" (hence the version 0.8)



0.31 hrs



1 pcs



0.20 mm



0.40 mm



PLA



2 g



Prusa MINI /
MINI+

[Hobby & Makers](#) > [Automotive](#)

Tags: [smartphone](#) [connector](#) [dashcam](#) [wolffilms](#)

BACKGROUND:

I'm using a Wolffilms Smartphone Dashcam Holder within my car as a smartphone mount. Unfortunately, the small connector piece between the suction cup mount and the smartphone mount broke some days ago so I decided, that this might be a nice first project.

PARTS MENTIONED:

Wolffilms Smartphone Dashcam Holder: <https://www.arktis.de/products/>

wolffilms-smartphone-dashcam-holder

The broken connector can be seen here in its original state: <https://www.arktis.de/products/wolffilms-smartphone-to-gopro-dji-osmo-action-flexible-adapter>

NOTE:

This is a “work in progress”, any improvements are welcome. Until now I printed the part as a prototype in PLA and the screw thread (which is out of metal in the original one) “didn't perform as intended”, means it didn't withstand the first mounting.

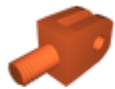
NEXT STEPS:

- a) printing the part in PETG, which will be a first-timer for me and testing the screw thread again
- b) redesigning the part in order to somehow include a metal screw within the design

TIMELAPSE:

As I am also experimenting with octolapse, I did a timelapse of the prototype print which also showed some room for improvements, as the printhead unfortunately felt the urge to “print in air”:

Model files



wolffilms_v08.stl

📄 .stl file (designed in Fusion 360)



wolffilms_v08.3mf

📄 .3mf file for Original Prusa MINI+

Print files



wolffilms_v08_02mm_pla_mini_31m.gcode

🌀 PLA 📏 0.40 mm 📏 0.20 mm ⌚ 0.31 hrs ⚖️ 2 g 🖨️ Prusa MINI / MINI+

📄 .gcode file for Original Prusa MINI+

License ©

This work is licensed under a
Creative Commons (4.0 International License)



Attribution

- ✗ | Sharing without ATTRIBUTION
- ✓ | Remix Culture allowed
- ✓ | Commercial Use
- ✓ | Free Cultural Works
- ✓ | Meets Open Definition