



Snap Fit Ornaments with Spinner Inserts



Adafruit

[VIEW IN BROWSER](#)

updated 5. 12. 2019 | published 4. 12. 2019

Summary

Make your own snap fitting ornament with spinning inserts!

[Seasonal designs](#) > [Winter & Christmas & New Year's](#)

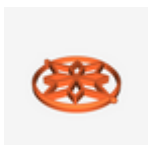
Tags: [christmas](#) [fidgetspinner](#) [snapfit](#) [ornament](#)

Make your own snap fitting ornament with spinning inserts!

Printed in Prusament PETG Carmine Red

<https://shop.prusa3d.com/en/prusament/933-prusament-petg-carmine-red-transparent-1kg.html>

Model files



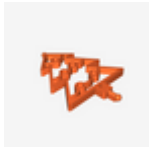
orn-snap-insert-burst.stl



orn-snap-insert-hexflake.stl



orn-snap-insert-jedisig.stl



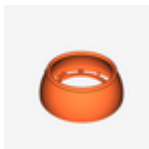
orn-snap-insert-tree.stl



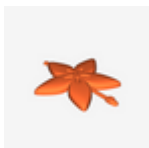
orn-snap-insert-flake.stl



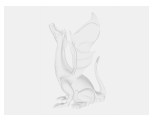
orn-snap-bot.stl



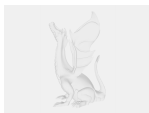
orn-snap-top.stl



orn-snap-insert-adafruit.stl



snapfit-ornament.step



snapfit-ornament.f3d

License

This work is licensed under a
Creative Commons (4.0 International License)



Attribution-ShareAlike

- ✗ | Sharing without ATTRIBUTION
- ✓ | Remix Culture allowed
- ✓ | Commercial Use
- ✓ | Free Cultural Works
- ✓ | Meets Open Definition