



Ergodox EZ complete split keyboard



cleanpop

[VIEW IN BROWSER](#)

updated 12. 2. 2022 | published 12. 2. 2022

Summary

File contains two folders: 1. Ergodox EZ case by CRYPTOPJONES 2. Sculpted Keycaps by v6ak

[Gadgets](#) > [Computers](#)

Tags: [split](#) [mechanicalkeyboard](#) [ergodox](#) [ergodoxez](#)
[splitkeyboard](#)

File contains two folders:

1. Ergodox EZ **case** by CRYPTOPJONES
2. Sculpted **Keycaps** by v6ak

As an owner of this keyboard I DO NOT recommend you buy it, but if you have one already these files will allow you to customize and alter it in interesting ways. If you want a split keyboard try the Moonlander version (I have not tried it) OR DIY. Honestly, with what I know now I would go with the latter.

If you can, try to print the keycaps on an MSLA printer. This is the recommended layout:

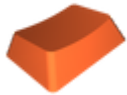
LEFT							RIGHT									
DCS 1 1.5	DCS 1	DCS 1	DCS 1	DCS 1	DCS 1	DCS 1				DCS 1	DCS 1	DCS 1	DCS 1	DCS 1	DCS 1	DCS 1 1.5
DCS 2 1.5	DCS 2	DCS 2	DCS 2	DCS 2	DCS 2					E1R SR	DCS 2	DCS 2	DCS 2 bcr	DCS 2	DCS 2	DCS 2 1.5
DCS 3 1.5	DCS 3	DCS 3	DCS 3	DCS 3	DCS 3 bc	DCS 3				E2R SR	DCS 3	DCS 3 bc	DCS 3	DCS 3	DCS 3	DCS 3 1.5
DCS 4 1.5	DCS 4	DCS 4	DCS 4	DCS 4	DCS 4						DCS 4	DCS 4	DCS 4	DCS 4	DCS 4	DCS 4 1.5
DCS EVBR	DCS EVBR	DCS EVBR	DCS EVBR	DCS EVBR	DCS EVBR		DSA 1i	DSA 1i	DSA 1i		DSA EVBR	DSA EVBR	DSA EVBR	DSA EVBR	DSA EVBR	DSA EVBR
							DSA el2i	DSA el2i	DSA 1							

bold = asymmetric (left half uses a different model from the right half)

Model files



dcs_2_15.stl



dcs_3_15.stl



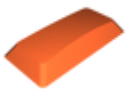
dsa_1.stl



dsa_1i.stl



dcs_1_15.stl



dsa_el2i.stl



dcs_3bc.stl



dcx_1.stl



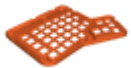
light_guide.stl



bottom-left.stl



top-left.stl



ergodox-ez.3mf



top-right.stl



insert.stl



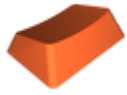
leg.stl



bottom-right.stl



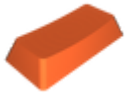
dcx_4-1.stl



dcx_4_15.stl



dcx_3.stl



dsa_2.stl



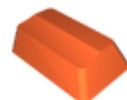
dcx_4.stl



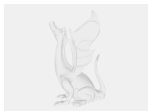
dcx_e2r_sr.stl



dcx_2bcr.stl



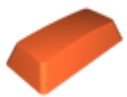
dcx_e1l_sr.stl



keycap.scad



dcx_evbr.stl



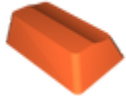
dsa_2i.stl



dcс_e2l_sr.stl



dcс_2.stl



dcс_e1r_sr.stl



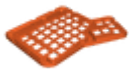
light_guide.stl



bottom-left.stl



top-left.stl



ergodox-ez.3mf



top-right.stl



insert.stl



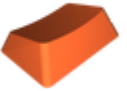
leg.stl



bottom-right.stl



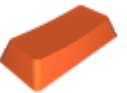
dcs_4-1.stl



dcs_4_15.stl



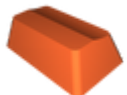
dcs_3.stl



dsa_2.stl



dcs_4.stl



dcs_e2r_sr.stl



dcs_2bcr.stl



dcs_1.stl



dcs_2_15.stl



dc3_3_15.stl



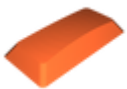
dsa_1.stl



dsa_1i.stl



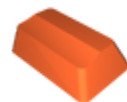
dc3_1_15.stl



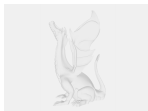
dsa_e12i.stl



dc3_3bc.stl



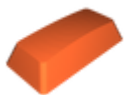
dc3_e1l_sr.stl



keycap.scad



dc3_evbr.stl



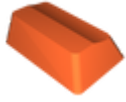
dsa_2i.stl



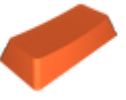
dc_s_e2l_sr.stl



dc_s_2.stl



dc_s_e1r_sr.stl



dsa_2.stl



dc_s_4.stl



dc_s_e2r_sr.stl



dc_s_2bcr.stl



dc_s_1.stl



dc_s_2_15.stl



dc_s_3_15.stl



dsa_1.stl



light_guide.stl



bottom-left.stl



top-left.stl



ergodox-ez.3mf



top-right.stl



insert.stl



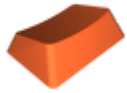
leg.stl



bottom-right.stl



dcs_4-1.stl



dcx_4_15.stl



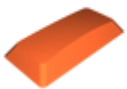
dcx_3.stl



dsa_1i.stl



dcx_1_15.stl



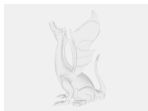
dsa_el2i.stl



dcx_3bc.stl



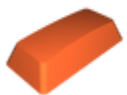
dcx_el1_sr.stl



keycap.scad



dcx_evbr.stl



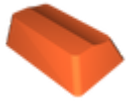
dsa_2i.stl



dcx_e2l_sr.stl



dcx_2.stl



dcx_e1r_sr.stl

License

This work is licensed under a
[Creative Commons \(4.0 International License\)](#)



Attribution

- ✗ | Sharing without ATTRIBUTION
- ✓ | Remix Culture allowed
- ✓ | Commercial Use
- ✓ | Free Cultural Works
- ✓ | Meets Open Definition