



Print-in-place bag clip



AlexMu

[VIEW IN BROWSER](#)

updated 7. 3. 2022 | published 12. 2. 2022

Summary

i took neoyarus hinge and added a strong clip closing mechanism.



2.15 hrs



2 pcs



0.20 mm



0.40 mm



PLA



19 g



Prusa
MK3/S/S+

[Household](#) > [Kitchen](#)

Tags: [clip](#) [bagclip](#)

neoyarus did a really great print in place design for the hinge!
I wanted to have a strong clip, instead of a second hinge, to lock it.

IMPROVEMENTS/CHANGES

- used the ZigZag to enforce the hinge even more
- for the long one to get even and more clamping force I added a bend to one arm
- snap fit to close
- small grip slots on both sides for additional grip during opening and closing

Prints best in PETG, PLA works as well.

This remix is based on



Print-in-place bag clip

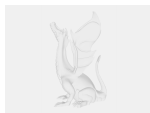
by neoyarus

Model files

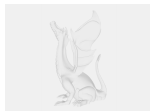


source files Fusion360

2 files



clipshort.f3d



clip150.f3d



clipsmall.3mf



cliplarge.3mf

Print files



clipsmall_02mm_pla_mk3s_35m.gcode

⊗ PLA ⊗ 0.40 mm ≡ 0.20 mm ⌚ 0.59 hrs ⚖ 5 g 🖨 Prusa MK3/S/S+



cliplarge_02mm_pla_mk3s_1h34m.gcode

PLA 0.40 mm 0.20 mm 1.56 hrs 14 g Prusa MK3/S/S+

License ©



This work is licensed under a
[Creative Commons \(4.0 International License\)](#)

Attribution

-
- ✗ | Sharing without ATTRIBUTION
 - ✓ | Remix Culture allowed
 - ✓ | Commercial Use
 - ✓ | Free Cultural Works
 - ✓ | Meets Open Definition