



## Filament-Ring



[VIEW IN BROWSER](#)

updated 12. 2. 2022 | published 12. 2. 2022

## Summary

Filament-Ring



0.91 hrs



24 pcs



0.10 mm



0.40 mm



PLA



3 g



Prusa  
MK3/S/S+

[Art & Design](#) > [Other Art & Designs](#)

Tags: [spool](#) [prusament](#) [filament](#) [ring](#) [prusamentspool](#)

## Filament-Ring

Stl-Files (without configuration)

3mf-Files (with configuration) for MK3S and Mini

Printfiles (G-Code) for MK3S and Mini

**Scale the size according to the chart** to print the correct ring size.  
Do not forget that the color change must be re-entered if the scaling is different.

The **ring sizes 55 - 60 are already pre-sliced** with and without supports as it is better for you to print.

In my opinion, the print **works better with supports**.

Have Fun!

## Filament-Ring

Stl-Dateien (ohne Konfiguration)

3mf-Dateien (mit Konfiguration) für MK3S und Mini

Druckdateien (G-Code) für MK3S und Mini

**Skaliert die Größe laut der Tabelle** um die korrekte Ringgröße zu drucken.

Vergesst nicht, dass bei unterschiedlichen Skalierungen der Farbwechsel neu eingegeben werden muss.

Die **Ringgrößen 55 - 60 sind schon gesliced** mit und ohne Supports wie es bei euch besser zu drucken geht.

Meiner Meinung nach **funktioniert der Druck besser mit Supports**

Viel Spaß!

Ring size / Ringgröße	Scaling / Skalierung %
46	83,50
47	85,50
48	87,50
49	89,00
50	91,00
51	92,50
52	94,00
53	96,00
54	98,29
55	100,00
56	101,50
57	103,50
58	105,00
59	107,50
60	109,00
61	111,00
62	112,50
63	114,00
64	116,00

<b>65</b>	<b>117,50</b>
<b>66</b>	<b>120,00</b>
<b>67</b>	<b>121,50</b>
<b>68</b>	<b>123,50</b>
<b>69</b>	<b>125,60</b>
<b>70</b>	<b>127,50</b>
<b>71</b>	<b>129,00</b>
<b>72</b>	<b>131,00</b>
<b>73</b>	<b>132,50</b>
<b>74</b>	<b>134,00</b>
<b>75</b>	<b>136,50</b>
<b>76</b>	<b>138,00</b>

## Model files



**filament-ring-stl.stl**



**filament-ring-size-55-mk3s.3mf**



**filament-ring-size-55-supported-mk3s.3mf**



**filament-ring-size-55-mini.3mf**



**filament-ring-size-55-supported-mini.3mf**



**filament-ring-size-56-mk3s.3mf**

---



**filament-ring-size-56-supported-mk3s.3mf**

---



**filament-ring-size-56-mini.3mf**

---



**filament-ring-size-56-supported-mini.3mf**

---



**filament-ring-size-57-mk3s.3mf**

---



**filament-ring-size-57-supported-mk3s.3mf**

---



**filament-ring-size-57-mini.3mf**

---



**filament-ring-size-57-supported-mini.3mf**

---



**filament-ring-size-58-mk3s.3mf**

---



**filament-ring-size-58-supported-mk3s.3mf**

---



**filament-ring-size-58-mini.3mf**

---



**filament-ring-size-58-supported-mini.3mf**

---



**filament-ring-size-59-mk3s.3mf**

---



**filament-ring-size-59-supported-mk3s.3mf**

---



**filament-ring-size-59-mini.3mf**

---



**filament-ring-size-59-supported-mini.3mf**

---



**filament-ring-size-60-mk3s.3mf**

---



**filament-ring-size-60-supported-mk3s.3mf**

---



**filament-ring-size-60-mini.3mf**

---



**filament-ring-size-60-supported-mini.3mf**

# Print files



## filament-ring-size-55-mk3s\_01mm\_pla\_mk3s\_55m.gcode

🌀 PLA 📏 0.40 mm ⚖️ 0.10 mm ⌚ 0.91 hrs ⚖️ 3 g 🖨️ Prusa MK3/S/S+



## filament-ring-size-55-supported-mk3s\_01mm\_pla\_m.gcode

🌀 PLA 📏 0.40 mm ⚖️ 0.10 mm ⌚ 1.03 hrs ⚖️ 3 g 🖨️ Prusa MK3/S/S+



## filament-ring-size-55-mini\_01mm\_pla\_mini\_51m.gcode

🌀 PLA 📏 0.40 mm ⚖️ 0.10 mm ⌚ 0.86 hrs ⚖️ 2 g 🖨️ Prusa MINI / MINI+



## filament-ring-size-55-supported\_01mm\_pla\_mini\_5.gcode

🌀 PLA 📏 0.40 mm ⚖️ 0.10 mm ⌚ 0.97 hrs ⚖️ 3 g 🖨️ Prusa MINI / MINI+



## filament-ring-size-56-mk3s\_01mm\_pla\_mk3s\_57m.gcode

🌀 PLA 📏 0.40 mm ⚖️ 0.10 mm ⌚ 0.95 hrs ⚖️ 3 g 🖨️ Prusa MK3/S/S+



## filament-ring-size-56-supported-mk3s\_01mm\_pla\_m.gcode

🌀 PLA 📏 0.40 mm ⚖️ 0.10 mm ⌚ 1.08 hrs ⚖️ 3 g 🖨️ Prusa MK3/S/S+



## filament-ring-size-56-mini\_01mm\_pla\_mini\_53m.gcode

🌀 PLA 📏 0.40 mm ⚖️ 0.10 mm ⌚ 0.89 hrs ⚖️ 3 g 🖨️ Prusa MINI / MINI+



## filament-ring-size-56-supported-mini\_01mm\_pla\_m.gcode

🌀 PLA 📏 0.40 mm ⚖️ 0.10 mm ⌚ 1.01 hrs ⚖️ 3 g 🖨️ Prusa MINI / MINI+



### filament-ring-size-57-mk3s\_01mm\_pla\_mk3s\_1h0m.gcode

🌀 PLA 🌀 0.40 mm ≡ 0.10 mm ⌚ 0.99 hrs ⚖️ 3 g 🖨️ Prusa MK3/S/S+



### filament-ring-size-57-supported-mk3s\_01mm\_pla\_m.gcode

🌀 PLA 🌀 0.40 mm ≡ 0.10 mm ⌚ 1.12 hrs ⚖️ 3 g 🖨️ Prusa MK3/S/S+



### filament-ring-size-57-mini\_01mm\_pla\_mini\_56m.gcode

🌀 PLA 🌀 0.40 mm ≡ 0.10 mm ⌚ 0.93 hrs ⚖️ 3 g 🖨️ Prusa MINI / MINI+



### filament-ring-size-57-supported-mini\_01mm\_pla\_m.gcode

🌀 PLA 🌀 0.40 mm ≡ 0.10 mm ⌚ 1.05 hrs ⚖️ 3 g 🖨️ Prusa MINI / MINI+



### filament-ring-size-58-mk3s\_01mm\_pla\_mk3s\_1h2m.gcode

🌀 PLA 🌀 0.40 mm ≡ 0.10 mm ⌚ 1.03 hrs ⚖️ 3 g 🖨️ Prusa MK3/S/S+



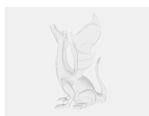
### filament-ring-size-58-supported-mk3s\_01mm\_pla\_m.gcode

🌀 PLA 🌀 0.40 mm ≡ 0.10 mm ⌚ 1.16 hrs ⚖️ 3 g 🖨️ Prusa MK3/S/S+



### filament-ring-size-58-mini\_01mm\_pla\_mini\_58m.gcode

🌀 PLA 🌀 0.40 mm ≡ 0.10 mm ⌚ 0.97 hrs ⚖️ 3 g 🖨️ Prusa MINI / MINI+



### filament-ring-size-58-supported-mini\_01mm\_pla\_m.gcode

🌀 PLA 🌀 0.40 mm ≡ 0.10 mm ⌚ 1.09 hrs ⚖️ 3 g 🖨️ Prusa MINI / MINI+



### filament-ring-size-59-mk3s\_01mm\_pla\_mk3s\_1h5m.gcode

🌀 PLA 🌀 0.40 mm ≡ 0.10 mm ⌚ 1.08 hrs ⚖️ 3 g 🖨️ Prusa MK3/S/S+



### filament-ring-size-59-supported-mk3s\_01mm\_pla\_m.gcode

PLA 0.40 mm 0.10 mm 1.22 hrs 4 g Prusa MK3/S/S+



### filament-ring-size-59-mini\_01mm\_pla\_mini\_1h1m.gcode

PLA 0.40 mm 0.10 mm 1.02 hrs 3 g Prusa MINI / MINI+



### filament-ring-size-59-supported-mini\_01mm\_pla\_m.gcode

PLA 0.40 mm 0.10 mm 1.14 hrs 4 g Prusa MINI / MINI+



### filament-ring-size-60-mk3s\_01mm\_pla\_mk3s\_1h7m.gcode

PLA 0.40 mm 0.10 mm 1.11 hrs 3 g Prusa MK3/S/S+



### filament-ring-size-60-supported-mk3s\_01mm\_pla\_m.gcode

PLA 0.40 mm 0.10 mm 1.24 hrs 4 g Prusa MK3/S/S+



### filament-ring-size-60-mini\_01mm\_pla\_mini\_1h3m.gcode

PLA 0.40 mm 0.10 mm 1.04 hrs 3 g Prusa MINI / MINI+



### filament-ring-size-60-supported-mini\_01mm\_pla\_m.gcode

PLA 0.40 mm 0.10 mm 1.17 hrs 4 g Prusa MINI / MINI+

## License ©

This work is licensed under a  
[Creative Commons \(4.0 International License\)](#)



**Attribution—Noncommercial—Share Alike**

- ✗ | Sharing without ATTRIBUTION
- ✓ | Remix Culture allowed
- ✗ | Commercial Use
- ✗ | Free Cultural Works
- ✗ | Meets Open Definition