

Spool Holder - Wall mounted

 **HolzerMax**[VIEW IN BROWSER](#)

updated 24. 1. 2023 | published 24. 1. 2023

Summary

For mounting filament spools flat to the wall - Different lengths for different spool sizes



2.60 hrs



1 pcs



0.25 mm



0.40 mm



PLA



41 g

Prusa MINI /
MINI+[3D Printers](#) > [Accessories](#)Tags: [spoolholder](#) [filamentspoolholder](#) [wallmounted](#)

I wanted to mount my spools flat to the wall in the small cabinet of my Prusa Mini. The shortest version was made specifically for Eryone spools, the longer versions were added later for other brands and spool sizes. Solidworks files included, I can provide .step files if necessary). The part reuses two/three of the 608 ball bearings from the original prusa spool holder, the rolling is very smooth. The arms where the bearings rest are the “achilles heel” of the print if you print it standing up like I did (on the back plate). They do hold up fine until now, though.

The front plate can be attached with simple wood screws, I used 3*30 mm Spax. You can also use very long screws if you want to stabilize the lever arm even more.

I printed both parts in PLA at once at 0.25mm layer height and 25% infill, 3 perimeters. Duration was around 2h30min.

I am very happy with the looks and the function.

EDIT: please also note my remix for some simple sleeves over the bearings, so that also spools without flat surface on the inside sit flat on the holders. --> <https://www.printables.com/model/282410-roll-for-my-wall-mounted-filament-spool-holders>

Notice: the Solidworks files were generated with a students version, so please be careful! Dont open them with a commercial licence, otherwise you will have the "student"-watermark all over you files.

Model files



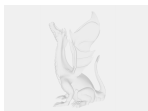
spool-holder-front-plate.stl



spool-holder-front-plate.sldprt

☐ watch out! Educational licence

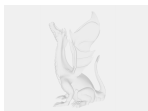
spool-holder-75mm.stl



spool-holder-75mm.sldprt

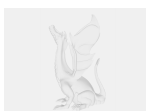
☐ watch out! Educational licence

spool-holder-60mm.stl



spool-holder-60mm.sldprt

☐ watch out! Educational licence



spool-holder-85mm.sldprt

☐ watch out! Educational licence

spool-holder-85mm.stl

Print files



spool_holder_025mm_pla_mini_2h36m.gcode

PLA 0.40 mm 0.25 mm 2.60 hrs 41 g Prusa MINI / MINI+

License

This work is licensed under a
[Creative Commons \(4.0 International License\)](#)



Attribution

-
- ✗ | Sharing without ATTRIBUTION
 - ✓ | Remix Culture allowed
 - ✓ | Commercial Use
 - ✓ | Free Cultural Works
 - ✓ | Meets Open Definition