

Chamberland 976LM Cover



brontide

[VIEW IN BROWSER](#)

updated 12. 2. 2022 | published 12. 2. 2022

Summary

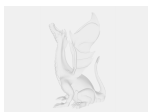
Replacement cover for the Chamberlain garage door opener.

[Household](#) > [Other House Equipment](#)

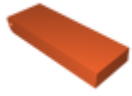
After the standard injection molded cover failed I went about modeling the base and cover in FreeCAD (both are in the freecad download). I originally modeled the cover 1:1 but discovered that the little nub that holds it in place didn't print that well so this version uses two M3 screws to hold the cover in place. CAD designed with .2mm give in the screw holes, if your printer is more accurate the M3 might slide in and out, they should screw in.

Printed in Ovature PLA Pro .2 layer height.

Model files



poolclip.fcstd



976lm-partcover.stl

License ©

This work is licensed under a
[Creative Commons \(4.0 International License\)](#)



Attribution—Noncommercial—Share Alike

- ✗ | Sharing without ATTRIBUTION
- ✓ | Remix Culture allowed
- ✗ | Commercial Use
- ✗ | Free Cultural Works
- ✗ | Meets Open Definition