



Luxaflex Duette shades lock (Work in Progress)



ericvenneker

[VIEW IN BROWSER](#)

updated 12. 2. 2022 | published 12. 2. 2022

Summary

Replacement lock for Luxaflex Duette shades



0.32 hrs



1 pcs



0.10 mm



0.40 mm



PET



1 g



Prusa
MK3/S/S+

[Household](#) > [Home Decor](#)

Tags: [replacement](#) [replacementpart](#) [luxaflex](#) [duette](#)

Replacement lock for Luxaflex Duette shades.

The wires of our Duette shades cut through the original lock part.

My apologies for the bad photo's. I already installed the lock and I am hesitant to take it apart just for some photo's :-)

The lock includes a top guide to make it easier to replace (no need to completely disassemble the wires).

The rolpin can be removed by pushing from the bottom with a small screwdriver.

The lock probably needs to be printed in ABS/ASA or PC. PLA and PETG are not able to withstand the friction of the wires and it will need replacing after a month or two. I do not have any ABS, ASA or PC filament, so I am unable to test this. On the other hand, because PLA and PETG will fail, the wires will be alright, and those are a lot harder to replace.

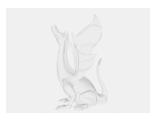
This model requires bed support.

Print, share, remix!

Model files



luxaflex-duette-shades-lock-v3.stl



luxaflex-duette-shades-lock-v3.f3d

Print files



luxaflex-duette-shades-lock_01mm_petg_mk3s_19m.gcode

 PET  0.40 mm  0.10 mm  0.32 hrs  1 g  Prusa MK3/S/S+

License

This work is licensed under a
[Creative Commons \(4.0 International License\)](https://creativecommons.org/licenses/by-sa/4.0/)



Attribution-ShareAlike

-
- ✗ | Sharing without ATTRIBUTION
 - ✓ | Remix Culture allowed

- ✓ | Commercial Use
- ✓ | Free Cultural Works
- ✓ | Meets Open Definition