



## IKEA Skadis Valve Index Holder with Charging Function



LayerCake

[VIEW IN BROWSER](#)

updated 6. 2. 2024 | published 22. 4. 2023

### Summary

A Valve Index holder for IKEA Skadis pegboard with integrated charging function.



23.49 hrs



3 pcs



0.20 mm



0.40 mm



PLA



260 g



Prusa  
MK3/S/S+

[Gadgets](#) > [Virtual Reality](#)

Tags: [ikea](#) [charging](#) [skadis](#) [valveindex](#)

Inspired by the Valve Index Boomerang Charger and my lack of desk space.

Thank you to Valve for sharing their Index CAD files.

**Make sure you have good layer adhesion and test the print, don't blame me for a dropped headset.**

The holder includes a retention pin, slide it into position once the controller holders are on the board, to prevent them from lifting together with the

controller. The pin might need some sanding to fit, I used a bit of graphite to lube it by painting the edges with a pencil.

## Required Hardware

- 8 screws M3x6 for the controller holders back plate
- 2 screws M3x16 for the cable clamps
- 2 screws M3x8 for the headset back plate
- 2 magnetic USB-C cables (1 set) <https://www.amazon.de/gp/product/B076PMSG48>

To make the USB cable fit through the holes in the Skadis pegboard the metal shell of the USB end needs to be removed. You can replace it with shrink tube to make it look nicer.

## Notes

Made with the personal version of Autodesk Fusion 360 therefore non commercial only.

Source files included.

## Model files



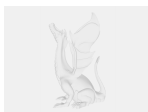
**valve-index-headset-holder.3mf**



**valve-index-controller-holders.3mf**



**valve-index-controller-holder-inlays.3mf**



**valve-index-headset-holder.f3z**

☐ Autodesk Fusion 360 source file. (Open this by selecting upload in Fusion 360)



## valve-index-controller-holder.f3z

☐ Autodesk Fusion 360 source file. (Open this by selecting upload in Fusion 360)

## Print files



### valve-index-controller-holder-inlays\_02mm\_pla\_m.gcode

⚙️ PLA ⚙️ 0.40 mm ⚙️ 0.20 mm ⌚ 0.12 hrs ⚖️ 1 g 🖨️ Prusa MK3/S/S+



### valve-index-headset-holder\_02mm\_pla\_mk3s\_8h15m.gcode

⚙️ PLA ⚙️ 0.40 mm ⚙️ 0.20 mm ⌚ 8.24 hrs ⚖️ 98 g 🖨️ Prusa MK3/S/S+



### valve-index-controller-holders\_02mm\_pla\_mk3s\_15.gcode

⚙️ PLA ⚙️ 0.40 mm ⚙️ 0.20 mm ⌚ 15.13 hrs ⚖️ 161 g 🖨️ Prusa MK3/S/S+

## License ©

This work is licensed under a  
[Creative Commons \(4.0 International License\)](#)



**Attribution-NonCommercial**

- ✗ | Sharing without ATTRIBUTION
- ✓ | Remix Culture allowed
- ✗ | Commercial Use
- ✗ | Free Cultural Works
- ✗ | Meets Open Definition