

Dremel bit holder wide



Archie

[VIEW IN BROWSER](#)

updated 12. 4. 2022 | published 12. 2. 2022

Summary

Just had to do one more custom. Wider, since it's only two rows, (right up to the max width on my bed) slightly deeper...

[Hobby & Makers](#) > [Tools](#)

Tags: [tools](#) [toolholder](#) [dremel](#) [dremelaccessories](#)
[dremelholder](#)

Just had to do one more custom.

Wider, since it's only two rows, (right up to the max width on my bed) slightly deeper on each level so things like bigger cutting disks will fit, and the third row converted to just a shelf for things like extra cutting disks, felt polishing cones, screws, whatever.

Print Settings

Printer Brand:

Dremel Digilab

Printer:

3D20

Rafts:

No

Supports:

No

Resolution:

.2

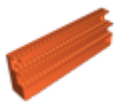
Infill:

15%

Filament: generic pla white

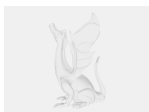
Category: Tool Holders & Boxes

Model files



dremel_wide.stl

Other files



sources.txt

[Find source .stl files on Thingiverse.com](#)

License

This work is licensed under a
[Creative Commons \(4.0 International License\)](#)



Attribution—Noncommercial—Share Alike

- ✗ | Sharing without ATTRIBUTION
- ✓ | Remix Culture allowed
- ✗ | Commercial Use
- ✗ | Free Cultural Works
- ✗ | Meets Open Definition