



Printed momentary leaf switch



Archie

[VIEW IN BROWSER](#)

updated 12. 4. 2022 | published 12. 2. 2022

Summary

Moved pegs and made new holes for full through-hole mounting. Perfect for buttons, joysticks, coin acceptors, etc. I'm...

[3D Printers](#) > [3D Printers - Upgrades](#)

Tags: [switch](#) [microswitch](#)

Moved pegs and made new holes for full through-hole mounting. Perfect for buttons, joysticks, coin acceptors, etc. I'm also going to shrink it a bit and see about using it on the Kossel mini printer I'm building as home stops.

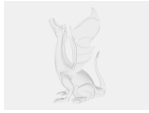
Category: 3D Printer Parts

Model files



leaf_switch_rev2.stl

Other files



sources.txt

[Find source .stl files on Thingiverse.com](#)

License

This work is licensed under a
Creative Commons (4.0 International License)



Attribution

- ✗ | Sharing without ATTRIBUTION
- ✓ | Remix Culture allowed
- ✓ | Commercial Use
- ✓ | Free Cultural Works
- ✓ | Meets Open Definition