

FLSUN I3 X Wheel Carriage

T Tailslide

[VIEW IN BROWSER](#)

updated 12. 4. 2022 | published 13. 2. 2022

Summary

I wound up remixing this from the original piece since I wound up with the carriage flopping up and down after a...

[3D Printers](#) > [3D Printers - Upgrades](#)

I wound up remixing this from the original piece since I wound up with the carriage flopping up and down after a couple prints. So, I moved the holes for the wheels 1mm closer together and thickened the mounting holes for a tighter fit. I also integrated it with the piece for mounting the print head, so the print head doesn't stick forward so far, and removing much of the extra plastic in the process. This makes for a much less 'front heavy' carriage. So far it still has very little slop for me.. I printed with 'armadillo' nylon alternative filament and it seems very strong.

You will need the front piece of the clamp from here: <https://www.thingiverse.com/thing:2143520>

Photo shows my remixed clamp for 4020 fan from here <https://www.thingiverse.com/thing:2510862> it has more offset on the duct to make room for my clip on fan.

Print Settings

Printer:

FLSUN I3

Rafts:

No

Supports:

No

Resolution:

0.2mm

Infill:

60%

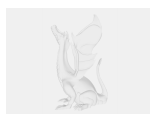
Category: 3D Printer Parts

Model files



reworked-tighterwheels-onepiece8.stl

Other files



sources.txt

[Find source .stl files on Thingiverse.com](https://www.thingiverse.com/thing/1000000)

License ©

This work is licensed under a
[Creative Commons \(4.0 International License\)](https://creativecommons.org/licenses/by/4.0/)



Attribution

- ✘ | Sharing without ATTRIBUTION
- ✓ | Remix Culture allowed
- ✓ | Commercial Use
- ✓ | Free Cultural Works
- ✓ | Meets Open Definition