

Shelly 1 - Wago holder



eMJay_3D

[VIEW IN BROWSER](#)

updated 13. 2. 2022 | published 13. 2. 2022

Summary

Shelly and Wago holder for Anycubic Mega S / Pro

[3D Printers](#) > [3D Printers - Upgrades](#)

Tags: [holder](#) [anycubic](#) [anycubici3mega](#) [wago](#) [shelly](#)

Caution

The following work should not be carried out without electrical knowledge. I'm not responsible for any damage caused. Everything you do is done at your own risk.

Unplug the power cord before opening the printer.

BOM

- 2x Spade Connectors
- 2x Nut M3
- M3x min 12mm Socket Head Cap Screw
- 2x Wago 221-413
- 1x Shelly 1 configured

Assembly

The holder attaches to the inside of the Y-axis limit switch holes. You have to remove the limit switch beforehand. The existing screws must be replaced with longer ones.

Options

If you control the printer via Octoprint you can use the two plugins **PSU Control** and **PSU Control - Shelly** to switch the printer on and off.

OctoPrint Einstellungen



Logging
Pluginmanager
Software Update
Ankündigungen
Eventmanager
Sicherung &
Wiederherstellung
Anonymous Usage
Tracking
Fehlertracking
Pi Support

PLUGINS

Arc-Welder
Bed Visualizer
Dashboard
Druckerbenachrichtigungen
Filament Manager
Firmware Check
Navbar Temperature Plugin
Octolapse
OneDrive Backup
PSU Control
PSU Control - Shelly
PrintTimeGenius Plugin
Printerdialoge
Slicer Thumbnails
Virtual Printer

General

☒ Show warning dialog when powering off via toggle button.

Switching

Switching Method Plugin

Switching Plugin PSU Control - Shelly [Settings](#)

☐ Enable switching with G-Code commands.

☐ Turn off when an unrecoverable firmware or communication error occurs.

Sensing

Sensing Method Plugin

Sensing Plugin PSU Control - Shelly [Settings](#)

Polling Interval 5 sec

Power On Options

☐ Automatically turn PSU ON

Post On Delay 0 sec

Über OctoPrint

Systeminfo

Schließen

Speichern

OctoPrint Einstellungen

Logging

Pluginmanager

Software Update

Ankündigungen

Eventmanager

Sicherung & Wiederherstellung

Anonymous Usage Tracking

Fehlertracking

Pi Support

PLUGINS

Arc-Welder

Bed Visualizer

Dashboard

Druckerbenachrichtigungen

Filament Manager

Firmware Check

Navbar Temperature Plugin

Octolapse

OneDrive Backup

PSU Control

PSU Control - Shelly

PrintTimeGenius Plugin

Printerdialoge

Slicer Thumbnails

Virtual Printer

PSU Control - Shelly settings

☐ Use Shelly Cloud

Connect directly to the Shelly device over your LAN. This requires the devices to be in the same network.

Address

192.168.1.42

The IP address or hostname of your Shelly device.

☒ Use authentication

Check this if your Shelly requires a username and password to connect.

Username

Password

Output

0

Certain Shelly devices have multiple outputs, select the output you'd like to switch here. For Shelly 1, keep this at 0.

Über OctoPrint

Systeminfo

Schließen

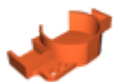
Speichern

Model files



shelly_wago_big.stl

☐ Holder with connection plan



shelly_wago.stl

☐ Only holder

License

This work is licensed under a
Creative Commons (4.0 International License)



Attribution—Noncommercial—Share Alike

- ✗ | Sharing without ATTRIBUTION
- ✓ | Remix Culture allowed
- ✗ | Commercial Use
- ✗ | Free Cultural Works
- ✗ | Meets Open Definition