

40x20 Fan housing



Teddan85

[VIEW IN BROWSER](#)

updated 13. 2. 2022 | published 13. 2. 2022

Summary

My take on a housing for 4020 (Or upgrade a 4010) fans that has been damages. Quick draw in Fusion360.

[3D Printers](#) > [3D Printers - Upgrades](#)

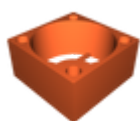
Tags: [fan](#) [4010](#) [4020](#)

Was in need of an housing to one of the fans for my Ender-3 V2.

I tried to search for something, but ended up with nothing, so this was made this morning in Fusion360.

Printed on my Anet ET4Pro, with Fiberlogy EASY-PLA Alien Green filament.

Model files



40x20-fan-housing.stl

License

This work is licensed under a
Creative Commons (4.0 International License)



Attribution—Noncommercial—Share Alike

- ✗ | Sharing without ATTRIBUTION
- ✓ | Remix Culture allowed
- ✗ | Commercial Use
- ✗ | Free Cultural Works
- ✗ | Meets Open Definition