

## Boogie's X-Axis - Raspberry Pi cam holder



TC

[VIEW IN BROWSER](#)

updated 14. 2. 2022 | published 14. 2. 2022

### Summary

A remix of multiple models to make a cam holder for Boogie's X-Axis

[3D Printers](#) > [3D Printers - Upgrades](#)

Tags: [prusa](#) [prusai3](#) [camera](#) [originalprusai3mk3](#)  
[cameramount](#) [prusai3mk3](#) [prusai3mk3s](#) [raspberrypicamera](#)  
[raspberrymount](#) [raspberrypi](#)

Raspberry Pi Cam holder - For Boggie's X-Axis

Its a remix of Boogie's [Cameraarm](#) and [Axis](#)

Also a remix of [lab27](#)'s "Prusa I3 MK3 Raspberry Pi Camera Mount"

-----  
In total for the Pi cam holder, and for the CameraArm that bolts to the axis

4x M3 Nuts

2x M3 x 10 bolts

2x M3 x 18 bolts

The nuts is a tight fit, so use a flathead screwdriver to push them in.. But be careful

Also I would recommend to adjust the camera when its unbolted from the axis

-----  
My settings:  
PETG

Layer height: 0.2

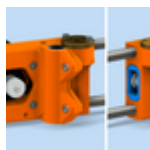
Perimeters: 3

Infill: 15%

No supports

Print as imported

## This remix is based on



**X-Axis revision with belt tensioner**

by Boogie



**Cameraarm for my revised X-axis**

by Boogie

## Model files



**cam\_holder\_v2.stl**

# License

This work is licensed under a  
**Creative Commons (4.0 International License)**



**Attribution—Noncommercial—Share Alike**

---

- ✗ | Sharing without ATTRIBUTION
- ✓ | Remix Culture allowed
- ✗ | Commercial Use
- ✗ | Free Cultural Works
- ✗ | Meets Open Definition