

Replacement Parts compatible with Krups 3Mix 4004



fluetke

[VIEW IN BROWSER](#)

updated 21. 2. 2023 | published 21. 2. 2023

Summary

A collection of spare-parts for the legendary robust Krups 3Mix 4004, rebuild from scratch so you can fix your mixer.



10.37 hrs



3 pcs



0.05 mm



30 ml



Prusa SL1

[Household](#) > [Kitchen](#)

Tags: [gear](#) [mechanical](#) [replacement](#) [parts](#) [sparepart](#)
[mixer](#) [krups](#) [3mix](#) [technicalspareparts](#) [helicalgear](#) [4004](#)

My trusted Krups 3Mix 4004 broke while kneading a particularly heavy dough, unfortunately spare parts for most of the mixer are no longer available from Krups itself or third-party spare-parts stores.

A newer model that was bought as a replacement for the older mixer, made clear very quickly, that the brand has obviously changed a lot since the 4004 was produced. The newer Mixers are no longer build to last, instead they seem to fail at much smaller tasks.

So, instead of buying the weaker new models, why not rebuild the parts in CAD and just keep fixing the good old quality machine.

The original parts were of course, not made through 3D-printing, instead they used die-casting and a few CNCed parts. For example, the gears were made out of a Material called Pertinax(which is basically the same stuff cheap PCBs are made of). If you really want to stay true to the original, you might want to CNC the gears.

If you enjoyed this print, please give it a like and feel free to buy me a coffee using the Donate-button next to my username on the top of the page. ;-)

Model files



3mix_3000_4004_gear_1.3mf

☐ Print this from strong resin or mill it from the original material Pertinax



3mix_4004_anti-vibration-pad.3mf

☐ print this in elastic material



3mix_4004_ejectorbutton_34744_2.3mf

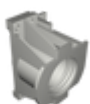


3mix_4004_rear_drive_door_2.3mf



krups_3mix_4004_cablesleeve.3mf

☐ print this is elastic material



krups_3mix_4004_rear_drive_port.3mf



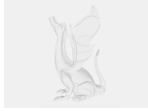
krups_3mix_4004_gearcover.3mf

Print files



krups_3mix_3000_4004_gear.sl1

🕒 2.01 hrs 🌀 8 ml ≡ 0.05 mm 💡 35s/7s 📄 Prusa SL1



krups_3mix_4004_ejector.sl1

🕒 7.06 hrs 🌀 18 ml ≡ 0.05 mm 💡 35s/7s 📄 Prusa SL1



krups_3mix_4004_rear_drive_door.sl1s

🕒 1.30 hrs 🌀 4 ml ≡ 0.05 mm 💡 25s/2s 📄 Prusa SL1S SPEED

License ©



This work is licensed under a
[Creative Commons \(4.0 International License\)](#)

Attribution-NonCommercial

- ✗ | Sharing without ATTRIBUTION
- ✓ | Remix Culture allowed
- ✗ | Commercial Use
- ✗ | Free Cultural Works
- ✗ | Meets Open Definition