

## SCX6 - Castle Mamba Monster X 8S - Mounts



SilverBullet126

[VIEW IN BROWSER](#)

updated 6. 5. 2024 | published 6. 5. 2024

### Summary

A Castle Creations Mamba Monster X 8S for the SCX6.

[Hobby & Makers](#) > [RC & Robotics](#)

Tags: [mount](#) [castle](#) [thingiverse](#) [scx6](#) [axialscx6](#) [mmx8s](#)

A Castle Creations Mamba Monster X 8S for the SCX6. This is meant to match up with my receiver box ([here](#)) and be used with the new 3Brothers RC Black Jacket motors.

There's both a lengthwise (LW) and width wise (WW) mount; choose as you see fit.

You'll need the stock screws to complete; this is a friction fit; print at 101% if you find the initial print too tight.

**Update (5/5/24)** - Added a new a Castle Cobra 8 mount for those running the newest ESC.

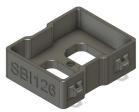
**Update (12/21/23)** - Added a new more compact MMX8S Width-Wise version. This is best for those without a lot of space or are running longer motors.

**Update (12/7/23)** - Copied over a new MMX8S Length-Wise (LW) mount that fits the 860kV motor; along with a smaller MMX mount for those running that ESC.

### Notes:

Turn on supports from the bed to get the best results. Push through from the top size to remove support material for the inset mounting holes.

## This remix is based on



**SCX6 - Castle Mamba Monster 8S and 6S - Mounts**

by silverbullet126

## Model files



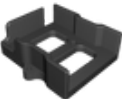
**scx6-mmx-mount.stl**



**scx6-mmx8s-mount-1280kv-lw.stl**



**scx6-mmx8s-mount-860kv-lw.3mf**



**scx6-mmx8s-mount-width-v3.3mf**



**scx6-cobra-8-mount-lw-pub.3mf**

# License ©

This work is licensed under a  
**Creative Commons (4.0 International License)**



## **Attribution-NonCommercial**

---

- ✗ | Sharing without ATTRIBUTION
- ✓ | Remix Culture allowed
- ✗ | Commercial Use
- ✗ | Free Cultural Works
- ✗ | Meets Open Definition