

# IOCREST M.2 Sata Card Sleeve

 ryancey

[VIEW IN BROWSER](#)

updated 13. 2. 2022 | published 13. 2. 2022

## Summary

Prevent the card to bend too much because of the cables tension.



0.78 hrs



1 pcs



0.10 mm



0.40 mm



PET



6 g



Prusa MINI /  
MINI+

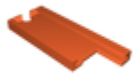
[Hobby & Makers](#) > [Electronics](#)

Tags: [sata](#) [m2](#) [iocrest](#)

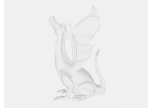
This SATA card is really handy but also really thin and can break very easily. Not compatible with five SATA cables applying pressure to it... This sleeve makes it a bit more sturdy.

Getting the supports out is a bit difficult but you can do it clean with a pair of narrow tweezers. Just make sure there is no more left before inserting the card!

## Model files



m2\_shield-body-v3.stl



m2\_shield.fcstd

## Print files



m2\_shield-body-v3\_01mm\_petg\_mini\_47m.gcode

PET 0.40 mm 0.10 mm 0.78 hrs 6 g Prusa MINI / MINI+

## License ©



This work is licensed under a  
[Creative Commons \(4.0 International License\)](#)

**Attribution—Noncommercial—Share Alike**

- ✗ | Sharing without ATTRIBUTION
- ✓ | Remix Culture allowed
- ✗ | Commercial Use
- ✗ | Free Cultural Works
- ✗ | Meets Open Definition