

Dyson Accessory Mounts

d darthsharkie

VIEW IN BROWSER

updated 19. 2. 2022 | published 19. 2. 2022

Summary

A variety of mounts for Dyson vaccums. These should fit v7/v8/v10/v11 at least, and maybe others.

[Household](#) > [Other House Equipment](#)

Tags: [accessory](#) [dyson](#) [dysonaccessories](#) [dysonaccessory](#)

Source / Attribution:

These are remixed from <https://www.thingiverse.com/thing:2860289>. I wanted to clean up the F3D file so I could follow it and create some additional mounts. Having done that, it makes sense to release my updates back to the community. I've printed a few of these, and they fit well.

Included Files:

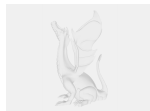
I've included the F3D file and the STLs. They should be oriented in printable position. There's also a 3mf file that gives suggested print and support settings in PrusaSlicer. While it shows a couple mounts, the suggestions should work for all of them.

Note: The "v" suffixes are from the Fusion 360 file version, not the Dyson vacuum version!

Print Settings:

- PLA works, PETG would be fine
- 2-4 perimeters, recommend at least 3 for the “Extra Wide” form factor.
- 15% infill, grid or gyroid
- 0.2mm layer height (untested at 0.3mm, but may work)
- .55mm external perimeter width
- .5mm internal perimeter width
- No gap fill
- PrusaSlicer snug supports
 - The notches in the receiving sections do not need supports

Model files



dyson_accessories_mount-v28.f3d



dysonaccessorymounts.3mf



insert-holder-v28.stl



left-double-holder-v28.stl



right-double-holder-v28.stl



left-double-holder-wide-v28.stl



right-double-holder-wide-v28.stl



left-double-holder-extra-wide-v28.stl



right-double-holder-extra-wide-v28stl.stl



left-offset-double-holder-v28.stl



right-offset-double-holder-v28.stl



left-offset-double-holder-wide-v28.stl



right-offset-double-holder-wide-v28.stl

License

This work is licensed under a
[Creative Commons \(4.0 International License\)](https://creativecommons.org/licenses/by/4.0/)



Attribution

- ✘ | Sharing without ATTRIBUTION
- ✓ | Remix Culture allowed
- ✓ | Commercial Use
- ✓ | Free Cultural Works
- ✓ | Meets Open Definition