

Layer cooling adjuster for SNAMPMAKER Original



NewSpeak

[VIEW IN BROWSER](#)

updated 12. 4. 2022 | published 13. 2. 2022

Summary

Snapmaker original's layer cooling fan is not adjustable.(Always on). This adjuster provide to manual cooling air...

[3D Printers](#) > [Accessories](#)

Tags: [snapmaker](#) [snapmakeraccessory](#)

Snapmaker original's layer cooling fan is not adjustable.(Always on).

This adjuster provide to manual cooling air adjusting.

Check below. <https://twitter.com/N3uuSp3ak/status/1238499397916229632>

===BOM===

Rotary switch (12 contacts)

Cosland RS-2688-0112-38N <http://akizukidenshi.com/catalog/g/gP-00100/>

Diode 1N4007

XH Connector housing

XH Post with base

XH Contact

some Wires

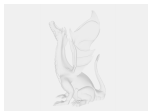
Printed housing

Category: 3D Printer Accessories

Model files



snapmaker-door-lh-foradjuster.stl



snapmaker-door-lh-fofadjuster_v16.f3d



snapmaker-door-lh-fofadjuster_v16.step

[Find source .stl files on Thingiverse.com](#)

License

This work is licensed under a

Creative Commons (4.0 International License)



Attribution-ShareAlike

-
- ✗ | Sharing without ATTRIBUTION
 - ✓ | Remix Culture allowed
 - ✓ | Commercial Use
 - ✓ | Free Cultural Works
 - ✓ | Meets Open Definition

