

"MONOBLOCK" ANYCUBIC I3 MEGA- S Direct Extruder MOD



NewSpeak

[VIEW IN BROWSER](#)

updated 12. 4. 2022 | published 13. 2. 2022

Summary

ANYCUBIC MEGA-S convert to Titan-type Direct Extruder. ==ATTENTION==
Not compatible for Original E3D Titan Extruder,...

[3D Printers](#) > [3D Printers - Upgrades](#)

Tags: [anycubic](#) [anycubici3mega](#) [directdriveextruder](#)

ANYCUBIC MEGA-S convert to Titan-type Direct Extruder.

==ATTENTION==

Not compatible for Original E3D Titan Extruder,

MEGA-S's Titan-Type Extruder has different dimension E3D's Titan Extruder.

Not compatible for E3D V6 Extruder,

MEGA-S's V5 J-Head Extruder Heat-sink has different dimension E3D's V6 Extruder.

- CONCEPT
 - Easy to build Direct Extruder.for ANYCUBIC MEGA-S.

- TECHNICAL POINT
 - Light weight direct extruder system.
 - 1 3D-print main part and additional printed intake and spacer parts.
 - Smooth heat-sink cooling duct.
 - E stepper Motor cooling duct integrated.
 - less additional parts. Heat-sink, Nozzle, Fans and Bolt, Nuts, you can reuse from original.
- Parts List
 - 1.MEGA-S's stock Nozzle Assy / Titan Extruder / Fans.
 - 2.E-Axis stepper Motor : 17HS08-1004S (thin&Light weight Stepper Motor)

<https://www.amazon.co.jp/dp/B074Y4NP78> <https://www.amazon.com/dp/B00PNEQ79Q> Other choice : 17HS10-0704S (25mm thickness)*not tested.
- STEP file included.You can make own mod.

*Update

- 2019/11/12:Update parts cooling duct.
- 2019/11/12:Added for E3D "Original" Titan dimension parts.(Not tested,Please feed back)
- 2019/11/29:Offset Motor.
- 2019/11/29: Improve separator shape at heat-break tube.
- 2019/11/29:Add Spacer for 25&30mm Stepping motor
- 2019/11/29:Add duct mount version. You can use Circular fan duct. (NOT TESTED.)

e.g.) <https://www.thingiverse.com/thing:2815388>

- 2019/12/14: Delete 17HM08-1204S . Shaft is short.
- 2020/1/18: Parts cooling duct is tested.
- 2020/1/18: added zip tie mount point.

Print Settings

Rafts:

Doesn't Matter

Supports:

Yes

Resolution:

0.15mm

Infill:

15%

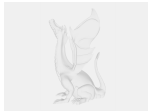
Filament: PETG/ABS//nGen

Notes:

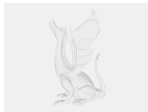
Recommend below

* 65 deg or more Support angle. * Support roof setting for easy remove support material. * 3 or more shell count. * Use Brim for better adhesion.
Category: 3D Printer Extruders

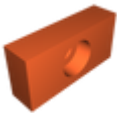
Model files



large_display_duct_intake_-_heat_sink_133957.stl



large_display_duct_for_stockblowernot_tested_1339.stl



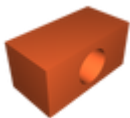
spacer-5mm.stl



partcoolingduct_for_stockblower.stl



main_body_-_anycubic_titan_like-withcoolerductmou.stl



spacer-10mm.stl



duct_intake_-_heat_sink.stl



monoblock_anycubic_i3_mega-s_directtitan_cable_v.step



main_body_-_anycubic_titan_like.stl

[Find source .stl files on Thingiverse.com](#)

License ©



This work is licensed under a
Creative Commons (4.0 International License)

Attribution-ShareAlike

-
- ✗ | Sharing without ATTRIBUTION
 - ✓ | Remix Culture allowed
 - ✓ | Commercial Use
 - ✓ | Free Cultural Works
 - ✓ | Meets Open Definition