

## Braille Alphabet & Numbers Blocks



Robotgrouse

[VIEW IN BROWSER](#)

updated 18. 2. 2022 | published 14. 2. 2022

### Summary

Blocks with letters/numerals on one face (raised to encourage finger tracing) and Braille cells on another.



39.83 hrs



3 pcs



0.20 mm



0.40 mm



PLA



460 g



Prusa  
MK3/S/S+

[Learning](#) > [Other 3D Objects for Learning](#)

Tags: [toys](#) [blocks](#) [accessibility](#) [braille](#)

I made these to donate to Starlight Children's Foundation hence the purple and yellow but go nuts! Remember to keep it high contrast for those with partial vision.

Don't scale as the Braille cells are a specific size.

The tray is optional but, if using it, the Braille has to face up or they won't fit. Will probably put a top layer on the edges next time but I like the look.

# Model files



**tray-v1.3mf**



**t-block-v1.stl**



**v-block-v1.stl**



**e-block-v1.stl**



**y-block-v1.stl**



**z-block-v1.stl**



**p-block-v1.stl**



**a-block-v1.stl**



**tray-v1.stl**

---



**l-block-v1.stl**

---



**number-3-block-v1.stl**

---



**f-block-v1.stl**

---



**b-block-v1.stl**

---



**i-block-v1.stl**

---



**w-block-v1.stl**

---



**q-block-v1.stl**

---



**o-block-v1.stl**

---



**d-block-v1.stl**

---



**number-8-block-v1.stl**

---



**number-4-block-v1.stl**

---



**s-block-v1.stl**

---



**j-block-v1.stl**

---



**u-block-v1.stl**

---



**number-5-block-v1.stl**

---



**x-block-v1.stl**

---



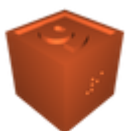
**a-9-blocks-v1.3mf**

---



**r-block-v1.stl**

---



**number-9-block-v1.stl**

---



**number-7-block-v1.stl**

---



**number-0-block-v1.stl**

---



**k-block-v1.stl**

---



**b-0-blocks-v1.3mf**

---



**number-2-block-v1.stl**

---



**h-block-v1.stl**

---



**number-1-block-v1.stl**

---



**m-block-v1.stl**

---



**n-block-v1.stl**

---



**g-block-v1.stl**

---



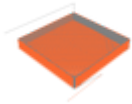
**c-block-v1.stl**

---



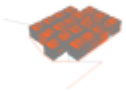
**number-6-block-v1.stl**

## Print files



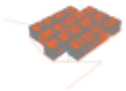
**tray-v1\_02mm\_pla\_mk3s\_8h0m.gcode**

PLA 0.40 mm 0.20 mm 8.00 hrs 84 g Prusa MK3/S/S+



**a-9-blocks-v1\_02mm\_pla\_mk3s\_15h55m.gcode**

PLA 0.40 mm 0.20 mm 15.92 hrs 188 g Prusa MK3/S/S+



**b-0-blocks-v1\_02mm\_pla\_mk3s\_15h54m.gcode**

PLA 0.40 mm 0.20 mm 15.91 hrs 188 g Prusa MK3/S/S+

## License

This work is licensed under a  
**Creative Commons (4.0 International License)**



**Attribution—Noncommercial—No Derivatives**

- ✗ | Sharing without ATTRIBUTION
- ✗ | Remix Culture allowed
- ✗ | Commercial Use
- ✗ | Free Cultural Works
- ✗ | Meets Open Definition