



## Ender5 Aluminum Bed Support



iplop

[VIEW IN BROWSER](#)

updated 12. 4. 2022 | published 14. 2. 2022

### Summary

These bed supports make the bed much more rigid (to a surprising degree) than the completely printed bed supports I...

[3D Printers](#) > [3D Printers - Upgrades](#)

Tags: [bed](#) [ender5](#) [bedsupport](#)

These bed supports make the bed much more rigid (to a surprising degree) than the completely printed bed supports I was using previously!

I've also included a .STEP file of everything to make editing it easier.

### 3/4in Angle Aluminum Ender5 Bed Supports

**Update\_12-09-19: Added STL for 4mm thick bed carriage plates. It's named "Support\_A-4mmPlate.stl" You'll need:**

- 3/4in angle aluminum extrusion; 2x 217.5mm lengths (I just cut mine to 217mm even)
- M5 screws & nuts x8
- Print one of every STL file here

## Instructions:

1. Cut two 217.5mm lengths of the 3/4in angle aluminum. I just scored the aluminum using a right angle ruler & file, then cut it using a dremel cut-off blade
2. Press fit the angle aluminum into the printed pieces
3. Press fit the M5 nuts into recesses on **Support\_C1** & **Support\_C2**
4. Snuggly fit **Support\_A** into the bed carriage frame, then carefully slide the supports **Support\_B1** & **Support\_B2** up and into place over the printer's rod bushings.
5. Position **Support\_B1** & **Support\_B2** so the bottom edges are flush with the printer's rod bushings, then secure **Support\_C1** & **Support\_C2** in place using M5 screws.

## Print Settings

### Printer Brand:

Creality

### Printer:

Ender 5

### Rafts:

Doesn't Matter

### Supports:

No

### Resolution:

.25mm

### Infill:

30%

**Filament:** 3dxtech PC/ASA Grey

Category: 3D Printer Parts

# Model files



**large\_display\_support\_c1\_134013.stl**

---



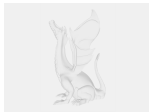
**large\_display\_support\_b2\_134013.stl**

---



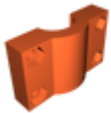
**large\_display\_support\_c2\_134013.stl**

---



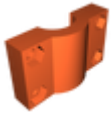
**large\_display\_support\_a-4mmplate\_134013.stl**

---



**support\_c2.stl**

---



**support\_c1.stl**

---



**bed\_support.stp**

---



**support\_b1.stl**

---



**support\_a-4mmplate.stl**

---



**support\_a.stl**

---



support\_b2.stl

[Find source .stl files on Thingiverse.com](#)

## License ©

This work is licensed under a  
**Creative Commons (4.0 International License)**



**Attribution—Noncommercial—Share Alike**

---

- ✗ | Sharing without ATTRIBUTION
- ✓ | Remix Culture allowed
- ✗ | Commercial Use
- ✗ | Free Cultural Works
- ✗ | Meets Open Definition