

Expansion / Flow Calibrator with tolerances



cobraroja

[VIEW IN BROWSER](#)

updated 12. 4. 2022 | published 14. 2. 2022

Summary

Designed from scratch in Fusion 360. File .f3d provided.

[3D Printers](#) > [Test Models](#)

Designed from scratch in Fusion 360. File .f3d provided.

Print Settings

Printer Brand:

Creality

Printer:

Ender 3

Rafts:

No

Supports:

No

Resolution:

0.2

Infill:

20

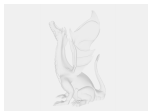
Filament: BQ PLA Pink

Category: 3D Printing Tests

Model files



01.stl



flow_test.f3d



02.stl



015.stl



025.stl

[Find source .stl files on Thingiverse.com](#)

License

This work is licensed under a
Creative Commons (4.0 International License)



Attribution

- ✘ | Sharing without ATTRIBUTION
- ✓ | Remix Culture allowed
- ✓ | Commercial Use
- ✓ | Free Cultural Works
- ✓ | Meets Open Definition