

HeroMe_Gen4 Alt BL Touch Mount (x- stop fix) - fix



cobraroja

[VIEW IN BROWSER](#)

updated 25. 12. 2022 | published 25. 12. 2022

Summary

The model have 2 shells, so the slicer generates 2 separate parts. I have fixed the model so the slicer doesn't create...

[3D Printers](#) > [Accessories](#)

The model have 2 shells, so the slicer generates 2 separate parts. I have fixed the model so the slicer doesn't create 2 separate objects.

probe offset: X-61 Y-18

Print Settings

Printer Brand:

Creality

Printer:

Ender 3

Rafts:

No

Supports:

Yes

Resolution:

0.2

Infill:

20%

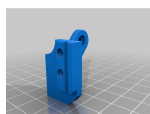
Filament: BQ Easy Go PLA White

Notes:

Any material does the trick.

Category: 3D Printer Accessories

This remix is based on



HeroMe_Gen4 Alt BL Touch Mount (x-stop fix)

by KentoHardRok

Model files



fix_fix.stl

[Find source .stl files on Thingiverse.com](#)

License ©

This work is licensed under a
[Creative Commons \(4.0 International License\)](#)



Attribution

- ✗ | Sharing without ATTRIBUTION
- ✓ | Remix Culture allowed
- ✓ | Commercial Use
- ✓ | Free Cultural Works
- ✓ | Meets Open Definition