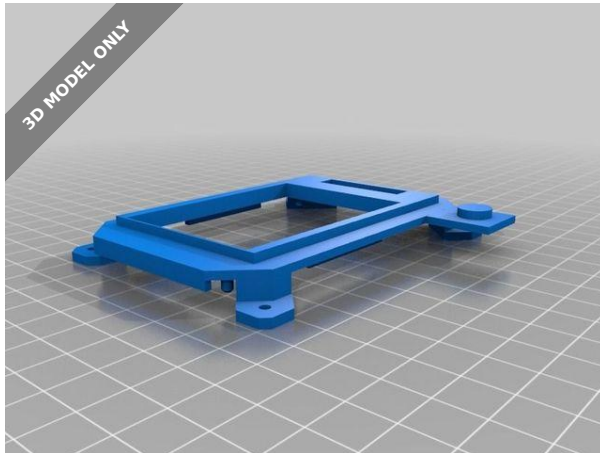


3D MODEL ONLY



# MKS TFT24 mount adapter for Ender-3



cobraroja

[VIEW IN BROWSER](#)

updated 25. 12. 2022 | published 25. 12. 2022

## Summary

I have remixed EugenioFructuoso's model filling the little hole.

[3D Printers](#) > [3D Printers - Upgrades](#)

Tags: [mks](#) [ender3](#) [crealityender3](#) [mkstft](#) [mkstft24](#) [tftscreen](#) [makerbase](#)

I have remixed EugenioFructuoso's model filling the little hole.

## Print Settings

### Printer Brand:

Creality

### Printer:

Ender 3

### Rafts:

No

### Supports:

Yes

**Resolution:**

0.2

**Infill:**

20

**Filament:** BQ PLA White

Category: 3D Printer Parts

## This remix is based on



**MKS TFT24 mount adapter for Ender-3**

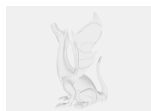
by EugenioFructuoso

## Model files



**soporte\_agujero.stl**

## Other files



**sources.txt**

[Find source .stl files on Thingiverse.com](#)

# License

This work is licensed under a  
**Creative Commons (4.0 International License)**



## Attribution

---

- ✗ | Sharing without ATTRIBUTION
- ✓ | Remix Culture allowed
- ✓ | Commercial Use
- ✓ | Free Cultural Works
- ✓ | Meets Open Definition