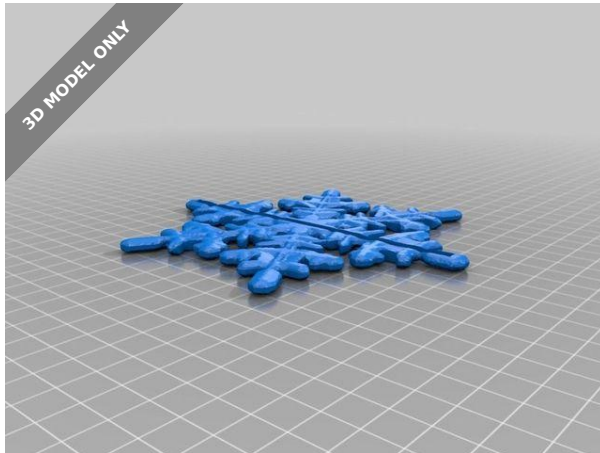


3D MODEL ONLY



## Snowflake (hole)

**cobraroja**[VIEW IN BROWSER](#)

updated 25. 12. 2022 | published 25. 12. 2022

## Summary

Hole 14 cm x 4 mm. The ice skate model I used is from @alliefauer (essence of the ice) uploaded to instructable...

[Household](#) > [Other House Equipment](#)Tags: [snowflake](#) [christmas](#) [snow](#) [xmas](#) [flake](#)

Hole 14 cm x 4 mm.

The ice skate model I used is from @alliefauer (essence of the ice) uploaded to instructable website.

Added f3d model of snowflake. Adjusted size of branches (meshmixer) so I could open a hole (fusion360).

## Print Settings

### Printer Brand:

Crealitiy

### Printer:

Ender 3

**Rafts:**

No

**Supports:**

No

**Resolution:**

0.2

**Infill:**

20

**Filament:** BQ PLA White

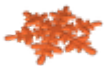
Category: Decor

## This remix is based on

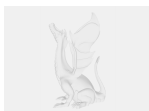
**Snowflake**

by CreativeTools

## Model files



**snowflake.stl**



**snowflake.f3d**

## Other files



**sources.txt**

[Find source .stl files on Thingiverse.com](#)

## License ©

This work is licensed under a  
**Creative Commons (4.0 International License)**



### Attribution

---

- ✗ | Sharing without ATTRIBUTION
- ✓ | Remix Culture allowed
- ✓ | Commercial Use
- ✓ | Free Cultural Works
- ✓ | Meets Open Definition