

Wardrobe support



cobraroja

[VIEW IN BROWSER](#)

updated 12. 4. 2022 | published 14. 2. 2022

Summary

Wardrobe support, internal width of 15.50 mm.

[Household](#) > [Office](#)

Tags: [support](#) [wardrobe](#) [wardrobehook](#) [wardrobehanger](#)

Wardrobe support, internal width of 15.50 mm.

Print Settings

Printer:

Crealty Ender 3

Rafts:

No

Supports:

Yes

Resolution:

0.2

Infill:

20

Filament:

BQ PLA

Red

Notes:

Print ~~upside down~~ sideways.

Post-Printing =====

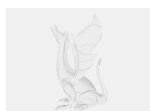
Fusion360, added f3d file.

Category: Organization

Model files



wardrobe_supp_ext.stl



wardrobe_support.f3d



wardrobe_support.stl

[Find source .stl files on Thingiverse.com](#)

License ©

This work is licensed under a
[Creative Commons \(4.0 International License\)](#)



Attribution

- ✘ | Sharing without ATTRIBUTION
- ✓ | Remix Culture allowed
- ✓ | Commercial Use
- ✓ | Free Cultural Works
- ✓ | Meets Open Definition