



Glow Jar / Lamp / Lantern Silhouettes - Ariel Mermaid and Fairies



Plexi

[VIEW IN BROWSER](#)

updated 12. 4. 2022 | published 14. 2. 2022

Summary

These silhouettes are for making Glow Jars or Glow Lanterns. They are printed and then attached to the inside of a...

[Art & Design](#) > [Sculptures](#)

Tags: [lamp](#) [lantern](#) [glow](#) [mermaid](#) [fairy](#) [littlmermaid](#)
[thelittlemermaid](#) [arielthemermaid](#) [fairies](#)

These silhouettes are for making Glow Jars or Glow Lanterns. They are printed and then attached to the inside of a glass jar. Once printed, these silhouettes are flat. To glue them to the inside of a jar, I suggest gently warming them with a hair dryer so that they can be fit to the curve of your jar.

Each silhouette is 0.6 mm thick. You can change the size and thickness by scaling the object.

Update Nov. 12, 2017

I've been learning to use a Cricut paper cutter. It is possible to cut designs based on SVG files using after market software. I have added the SVG files for those wanting to use them.

Category: Sculptures

Model files



fairy_5.stl



ariel_mermaid_silhouette_2_06mm.stl

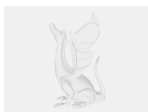


fairy_silhouette_3.stl

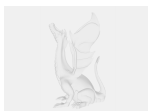


ariel_mermaid_silhouette_06.stl

Other files



fairy5.svg



arielsilhouette2.svg



mermaid1b.svg



fairy3.svg

License ©

This work is licensed under a
Creative Commons (4.0 International License)



Attribution

- ✗ | Sharing without ATTRIBUTION
- ✓ | Remix Culture allowed
- ✓ | Commercial Use
- ✓ | Free Cultural Works
- ✓ | Meets Open Definition