



## Cartridge - Cricut Paper Cutting Machine George Cartridge



Plexi

[VIEW IN BROWSER](#)

updated 12. 4. 2022 | published 14. 2. 2022

## Summary

This Thing shows how to make a Cricut Paper Cutting Machine George Cartridge. The George Cartridge is is the basic...

---

[Art & Design](#) > [Other Art & Designs](#)

---

Tags: [cartridge](#) [cricut](#)

---

This Thing shows how to make a Cricut Paper Cutting Machine George Cartridge. The George Cartridge is is the basic cartridge that most Cricut Paper Cutting machines come with. Sometimes people lose the cartridge making the machine inoperable. You can purchase a cartridge from Cricut or make this one.

To make this cartridge you will need to 3D print the shell in PLA and then make the small PC Board by cutting the finger area off of an old PC ISA Card. ISA style cards are now obsolete and should be easy to find. Cut the small board to 28 mm by 20 mm using a Hacksaw. You should end up with 10 fingers on each side of the PC board. Using the photo I provided, solder jumpers on both sides of the board which makes the cartridge work when plugged in in either direction. Test the PC board you made with your Cricut before you assemble it with the shell. I have provided photos of an actual George Cartridge in case my instructions are not clear.

Use Super Glue Glue to glue the PC board in the slot of the shell. Make sure the PC board is flush with the end of the shell and then glue the two halves of the shell together. Be careful to not get any glue on the fingers and definitely wait until the glue is dry before inserting the cartridge into your Cricut.

## Print Settings

### Printer:

HyperCube

### Rafts:

No

### Supports:

Yes

### Resolution:

0.1 mm or 0.2 mm

### Infill:

35%

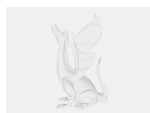
### Notes:

Be sure to use supports

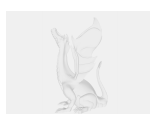
PLA is suggested so that Super Glue can be used for assembly

Category: Art Tools

## Model files



**large\_display\_cricut\_cartridge\_base\_v5\_134392.stl**



**large\_display\_cricut\_cartridge\_lid\_v5\_134392.stl**



cricut\_cartridge\_base\_v5.stl



cricut\_cartridge\_lid\_v5.stl

[Find source .stl files on Thingiverse.com](#)

## License ©

This work is licensed under a  
[Creative Commons \(4.0 International License\)](#)



### Attribution

- 
- ✗ | Sharing without ATTRIBUTION
  - ✓ | Remix Culture allowed
  - ✓ | Commercial Use
  - ✓ | Free Cultural Works
  - ✓ | Meets Open Definition