



2020 LCD Display Mount



Plexi

[VIEW IN BROWSER](#)

updated 12. 4. 2022 | published 14. 2. 2022

Summary

This movable hinged bracket allows the LCD display to be mounted on a vertical 2020 extrusion. The display may lay...

[3D Printers](#) > [3D Printers - Upgrades](#)

Tags: [lcd](#) [hypercube](#) [corexy](#) [fullgraphic](#)

This movable hinged bracket allows the LCD display to be mounted on a vertical 2020 extrusion. The display may lay flat within the frame or be moved out at up to a 90 degree angle. The joint is strong and easy to move. It uses a 35 mm x 6 mm Phillips or cap head screw, a couple of 6 mm washers, and a 6 mm Nyloc nut. Place two washers between the two parts of the hinge to make the hinge move smoothly. The display mounts to the back plate using existing holes and two 15 mm x 3 mm screws. The whole display mounts to the 2020 extrusion using 5 mm x 8 mm button head screws and extrusion fasteners.

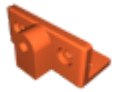
This is the LCD enclosure I used. Very good design! <http://www.thingiverse.com/thing:213852>

Be sure to print with at least 50% infill. This joint has a fair amount of stress on it.

This is my HyperCube Printer where I used this display mount: <http://www.thingiverse.com/make:272257>

Category: 3D Printer Parts

Model files

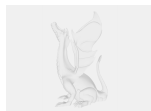


lcd_case_mount_bracketv4.stl



lcd_case_mount_backplate_nonotchv3.stl

Other files



lcd_screen_instructions.pdf

[Find source .stl files on Thingiverse.com](#)

License

This work is licensed under a
[Creative Commons \(4.0 International License\)](#)



Attribution

- ✗ | Sharing without ATTRIBUTION
- ✓ | Remix Culture allowed
- ✓ | Commercial Use
- ✓ | Free Cultural Works
- ✓ | Meets Open Definition

